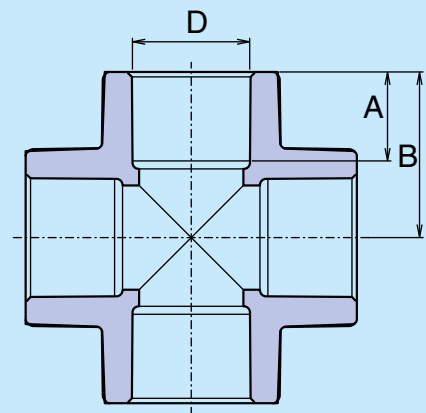
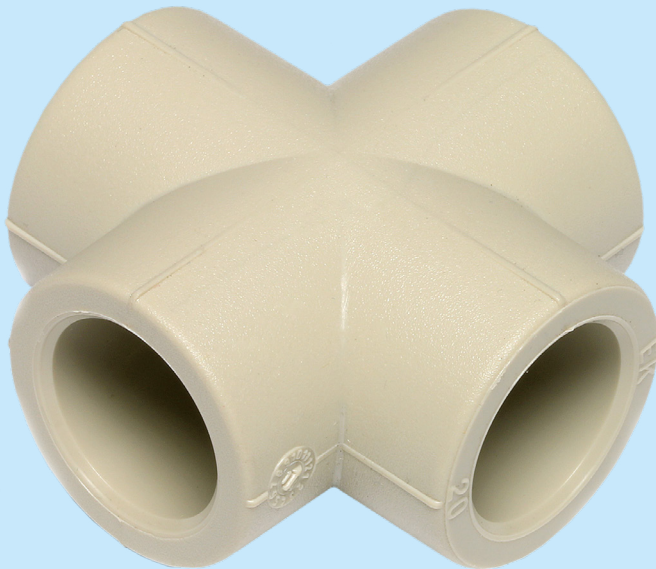
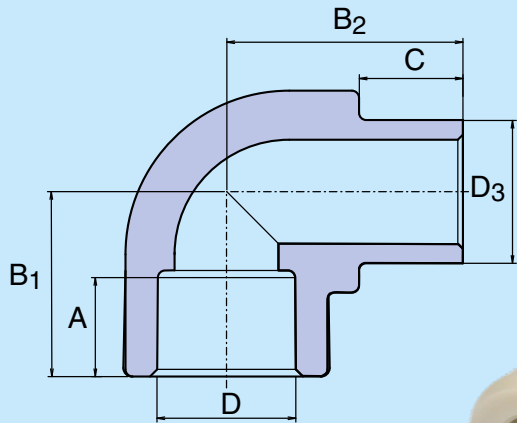
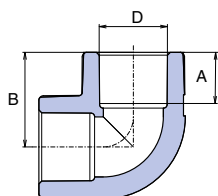


Technical Product Sheet



All plastic fittings



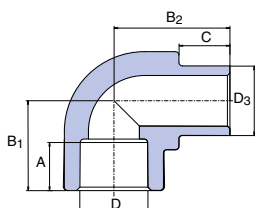


ELBOW 90 °

D	A	B	☐	☐	⚖	CODE
mm	mm	m	l.	ll.	kg/pc	
16	13,0	23,2	50	250	0,010	SKO01690XX
20	14,5	26,8	50	500	0,018	SKO02090XX
25	16,0	31,0	50	250	0,030	SKO02590XX
32	18,0	36,5	25	150	0,056	SKO03290XX
40	20,5	43,0	10	70	0,100	SKO04090XX
50	23,5	51,0	10	40	0,158	SKO05090XX
63	27,5	61,5	5	15	0,334	SKO06390XX
75*	30,0	70,1	2	6	0,399	SKO07590RCT
90*	33,0	80,6	1	6	0,600	SKO09090RCT
110*	37,0	94,6	1	3	1,016	SKO11090RCT
⊕ 125*	40,0	106,6	1	2	1,481	SKO12590RCT

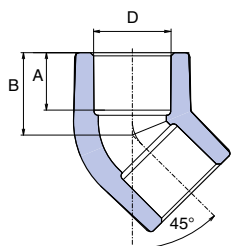
⊕ Information about delivery on request

* material PP-RCT



ELBOW 90 ° INTERNAL / EXTERNAL

D, D ₃	A	B ₁	B ₂	C	☐	☐	⚖	CODE
mm	mm	mm	mm	mm	l.	ll.	kg/pc	
16	13,0	21,3	25,0	12,0	50	200	0,006	SKO116XXXX
20	14,5	26,8	30,3	13,0	50	250	0,014	SKO120XXXX
25	16,0	31,0	35,0	14,0	50	200	0,024	SKO125XXXX
32	18,0	36,5	42,2	16,0	25	100	0,044	SKO132XXXX

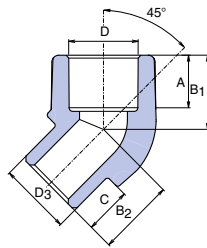


ELBOW 45 °

D	A	B	☐	☐	⚖	CODE
mm	mm	m	l.	ll.	kg/pc	
16	13,0	18,7	50	200	0,008	SKO01645XX
20	14,5	20,8	100	500	0,014	SKO02045XX
25	16,0	24,0	50	250	0,024	SKO02545XX
32	18,0	27,0	20	80	0,042	SKO03245XX
40	20,5	31,5	5	25	0,082	SKO04045XX
50	23,5	36,5	5	20	0,122	SKO05045XX
63	27,5	43,0	5	10	0,280	SKO06345XX
75*	30,0	48,1	2	6	0,282	SKO07545RCT
90*	33,0	54,5	1	6	0,406	SKO09045RCT
110*	37,0	62,1	1	4	0,709	SKO11045RCT
⊕ 125*	40,0	69,8	1	3	1,048	SKO12545RCT

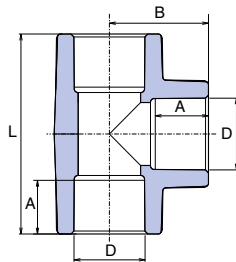
⊕ Information about delivery on request

* material PP-RCT



ELBOW 45 ° INTERNAL / EXTERNAL

D	D ₃	A	B ₁	B ₂	D	⊠	⊠	⚖	CODE
mm	mm	mm	mm	mm	mm	l.	ll.	kg/pc	
16	16	13,0	18,7	18,7	12,0	50	200	0,008	SKO11645XX
20	20	14,5	20,8	21,5	13,0	10	100	0,012	SKO12045XX
25	25	16,0	24,0	24,0	14,0	10	100	0,026	SKO12545XX

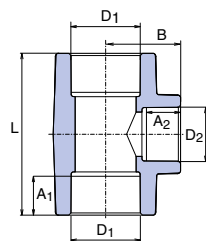


TEE

D	A	B	L	⊠	⊠	⚖	CODE
mm	mm	mm	mm	l.	ll.	kg/pc	
16	13,0	23,2	46,4	50	250	0,012	STK016XXXX
20	14,5	27,0	54,0	50	300	0,022	STK020XXXX
25	16,0	32,0	60,0	50	200	0,038	STK025XXXX
32	18,0	35,7	70,0	20	100	0,070	STK032XXXX
40	20,5	38,5	86,2	10	50	0,124	STK040XXXX
50	23,5	51,0	102,0	5	30	0,196	STK050XXXX
63	27,5	61,5	123,0	5	15	0,430	STK063XXXX
75*	30,0	70,1	140,2	1	5	0,485	STK075RCTX
90*	33,0	80,6	161,2	1	6	0,742	STK090RCTX
110*	37,0	94,6	189,2	1	3	1,231	STK110RCTX
⊙125*	40,0	105,5	211,0	1	2	1,764	STK125RCTX

⊙ Information about delivery on request

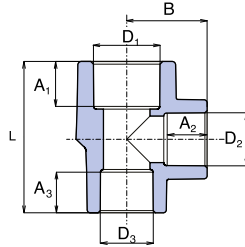
* material PP-RCT



REDUCING TEE

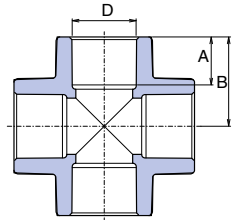
D ₁	D ₂	A ₁	A ₂	L	B	⊠	⊠	⚖	CODE
mm	mm	mm	mm	mm	mm	l.	ll.	kg/pc	
20	16	14,5	13,0	53,0	23,0	50	300	0,018	STKR02016X
25	20	16,0	14,5	55,0	29,0	50	200	0,032	STKR02520X
32	20	18,0	14,5	67,0	34,4	50	150	0,052	STKR03220X
32	25	18,0	16,0	73,0	34,4	25	100	0,062	STKR03225X
40	20	20,5	14,5	64,5	38,0	20	60	0,082	STKR04020X
40	25	20,5	16,0	66,0	40,2	10	50	0,090	STKR04025X
40	32	20,5	18,0	86,0	41,5	10	40	0,132	STKR04032X
50	25	23,5	16,0	77,0	43,4	5	15	0,138	STKR05025X
50	32	23,5	18,0	84,0	46,0	5	30	0,152	STKR05032X
50	40	23,5	20,5	91,4	47,4	5	15	0,176	STKR05040X
63	25	27,5	16,0	85,0	49,9	5	10	0,239	STKR06325X
63	32	27,5	18,0	92,0	52,0	5	15	0,290	STKR06332X
63	40	27,5	20,5	100,0	54,6	5	15	0,306	STKR06340X
63	50	27,5	23,5	110,0	57,2	5	15	0,340	STKR06350X
75*	40	30,0	20,5	115,4	63,5	1	15	0,365	STKR07540RCT
75*	50	30,0	23,5	115,4	63,5	1	15	0,345	STKR07550RCT
75*	63	30,0	27,5	128,4	67,5	1	15	0,405	STKR07563RCT
90*	75	33,0	30,0	146,2	77,7	1	15	0,605	STKR09075RCT

* material PP-RCT



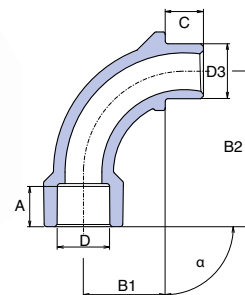
REDUCING TEE

D ₁	D ₂	D ₃	A ₁	A ₂	A ₃	L	B	☒	☒	⚖	CODE
mm	mm	mm	mm	mm	mm	mm	mm	I.	II.	kg/pc	
25	20	20	16,0	14,5	14,5	55,2	29,3	10	50	0,028	STKR0252020
32	20	20	18,0	14,5	14,5	57,3	32,8	10	50	0,040	STKR0322020
32	20	25	18,0	14,5	16,0	58,9	32,8	10	50	0,044	STKR0322520
32	25	25	18,0	18,0	16,0	66,0	34,4	10	50	0,052	STKR0322525



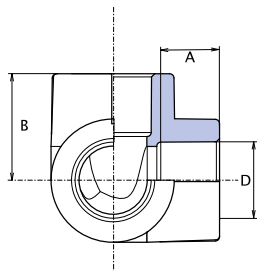
CROSS PIECE

D ₃	A	B ₁	☒	☒	⚖	CODE
mm	mm	mm	I.	II.	kg/pc	
20	14,5	26,3	25	100	0,024	SKRI020XXX
25	16,0	30,1	25	100	0,042	SKRI025XXX
32	18,0	35,0	10	40	0,070	SKRI032XXX
40	20,5	42,0	10	30	0,128	SKRI040XXX



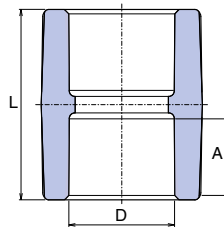
BEND

D	D ₃	A	B ₁	B ₂	C	α	☒	☒	⚖	CODE
mm	mm	mm	mm	mm	mm	°	I.	II.	kg/pc	
20	20	14,5	37,0	56,0	13,6	90°	25	100	0,022	SO02090XXX
25	25	16,0	45,0	67,0	14,6	90°	10	100	0,036	SO02590XXX



THREE-WAY ELBOW

D	A	B	📦	📦	⚖️	CODE
mm	mm	mm	I.	II.	kg/pc	
20	14,5	26,8	10	50	0,020	SKOT020XXX
25	16,0	29,5	10	40	0,032	SKOT025XXX
32	18,0	35,0	5	20	0,062	SKOT032XXX
40	20,5	41,5	5	15	0,108	SKOT040XXX

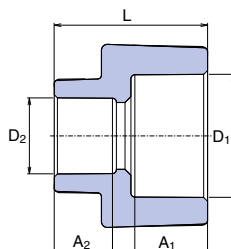


SOCKET

D	A	L	📦	📦	⚖️	CODE
mm	mm	mm	I.	II.	kg/pc	
16	13,0	33,0	50	250	0,006	SNA016XXXX
20	14,5	34,6	50	500	0,010	SNA020XXXX
25	16,0	37,8	50	250	0,018	SNA025XXXX
32	18,0	40,0	25	150	0,034	SNA032XXXX
40	20,5	48,0	20	80	0,056	SNA040XXXX
50	23,5	53,0	10	70	0,082	SNA050XXXX
63	27,5	65,0	5	30	0,118	SNA063XXXX
75*	30,0	68,0	1	25	0,172	SNA075RCTX
90*	33,0	74,2	1	20	0,275	SNA090RCTX
110*	37,0	85,2	1	5	0,472	SNA110RCTX
⊕125*	40,0	93,0	1	6	0,638	SNA125RCTX

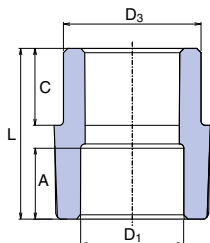
⊕ Information about delivery on request

* material PP-RCT



REDUCER

D ₁	D ₂	A ₁	D ₂	L	📦	📦	⚖️	CODE
mm	mm	mm	mm	mm	I.	II.	kg/pc	
25	20	16,0	14,5	34,0	50	450	0,014	SRE02520XX
32	20	18,0	14,5	39,0	50	250	0,026	SRE03220XX
32	25	18,0	16,0	39,5	50	250	0,028	SRE03225XX

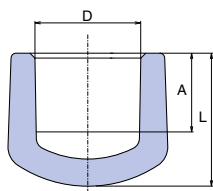


REDUCER INTERNAL / EXTERNAL

D ₃	D ₁	A	L	C	☒	☒	⚖	CODE
mm	mm	mm	mm	mm	l.	ll.	kg/pc	
20	16	13,0	32,5	13,0	50	250	0,006	SRE12016XX
25	20	14,5	34,0	14,0	50	500	0,010	SRE12520XX
32	20	14,5	40,0	16,0	50	200	0,016	SRE13220XX
32	25	16,0	39,5	16,0	50	300	0,018	SRE13225XX
40	20	14,5	47,0	18,5	10	50	0,024	SRE14020XX
40	25	16,0	45,4	18,5	10	50	0,026	SRE14025XX
40	32	18,0	48,2	18,5	20	60	0,034	SRE14032XX
50	25	16,0	41,3	21,3	10	50	0,042	SRE15025XX
50	32	18,0	55,5	22,0	10	50	0,052	SRE15032XX
50	40	20,5	52,0	22,0	10	50	0,048	SRE15040XX
63	25	16,0	49,3	25,3	5	50	0,070	SRE16325XX
63	32	18,0	62,5	25,3	5	70	0,080	SRE16332XX
63	40	20,5	58,5	25,3	5	70	0,078	SRE16340XX
63	50	23,5	58,5	25,3	5	70	0,078	SRE16350XX
75*	40	20,5	56,9	28,9	5	20	0,094	SRE17540RCT
75*	50	23,5	51,4	28,9	5	20	0,100	SRE17550RCT
75*	63	27,5	62,9	33,4	5	25	0,112	SRE17563RCT
90*	50	23,5	57,9	33,4	1	20	0,157	SRE19050RCT
90*	63	27,5	56,9	33,4	1	20	0,150	SRE19063RCT
90*	75	30,0	69,4	33,4	1	12	0,185	SRE19075RCT
110*	75	30,0	60,5	39,4	1	10	0,251	SRE111075RCT
110*	90	33,0	79,4	39,4	1	12	0,303	SRE111090RCT
125**	110	37,0	100,3	42,0	1	10	0,500	SRE1125110RCT

ⓘ Information about delivery on request

* material PP-RCT



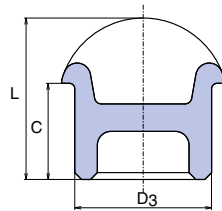
BLANKING PLUG

D	A	B	☒	☒	⚖	CODE
mm	mm	mm	l.	ll.	kg/pc	
16	13,5	20,9	50	400	0,004	SZA016XXXX
20	14,5	24,5	50	150	0,008	SZA020XXXX
25	16,0	28,0	50	150	0,014	SZA025XXXX
32	18,0	33,0	20	100	0,026	SZA032XXXX
40	20,5	39,5	5	25	0,048	SZA040XXXX
50	23,5	47,0	5	25	0,078	SZA050XXXX
63	27,5	53,5	5	25	0,170	SZA063XXXX
75*	30,0	55,5	5	5	0,183	SZA075RCTX
90*	33,0	61,7	1	6	0,279	SZA090RCTX
110*	37,0	71,4	1	4	0,480	SZA110RCTX
125**	40,0	79,5	1	7	0,712	SZA125RCTX

ⓘ Information about delivery on request

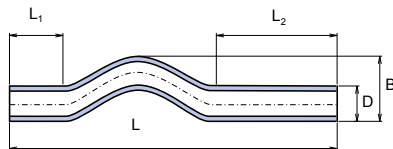
* material PP-RCT

BLANKING PLUG INTERNAL



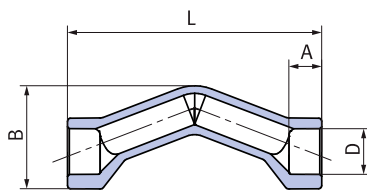
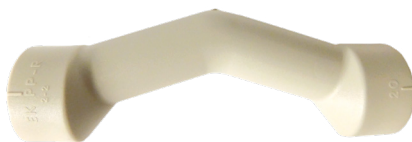
D ₃	C	L	☒	☒	⚖	CODE
mm	mm	mm	I.	II.	kg/pc	
20,0	14,3	23,5	40	160	0,004	SZA120XXXE

CROSSOVER S 2,5 / PN 20 / SDR 6



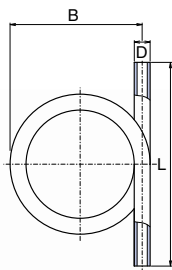
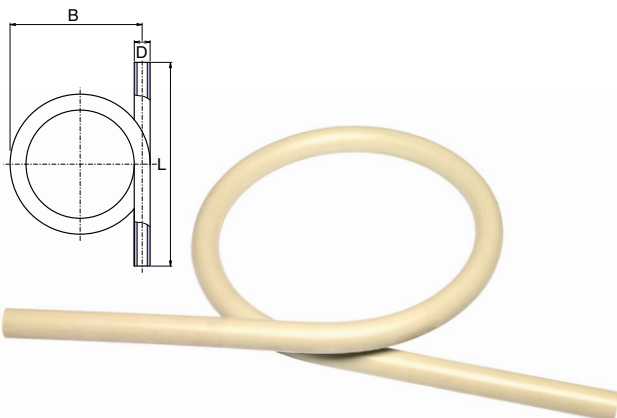
D ₃	S	B	L	L ₁	L ₂	☒	☒	⚖	CODE
mm	(PN20)	mm	mm	mm	mm	I.	II.	kg/pc	
16	2,5 (20)	35,0	400,0	80,0	180,0	10	50	0,044	SKR016P20X
20	2,5 (20)	47,0	400,0	80,0	180,0	10	50	0,070	SKR020P20X
25	2,5 (20)	52,0	400,0	80,0	120,0	10	50	0,110	SKR025P20X
32	2,5 (20)	65,0	390,0	64,0	106,0	5	20	0,174	SKR032P20X
40	2,5 (20)	65,0	390,0	64,0	106,0	5	20	0,268	SKR040P20X

CROSSOVER WITH SOCKET

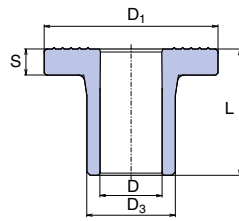


D	S	A	B	L	☒	☒	⚖	CODE
mm	(PN20)	mm	mm	mm	I.	II.	kg/pc	
20	2,5 (20)	14,5	42,6	117,0	10	50	0,031	SKRH020P20
25	2,5 (20)	16,0	54,8	135,0	10	50	0,060	SKRH025P20

COMPENSATION PIPE S 2,5 / PN 20 / SDR 6

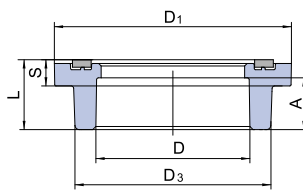


D	S	B	L	☒	☒	⚖	CODE
mm	(PN20)	mm	mm	I.	II.	kg/pc	
16	2,5 (20)	185,0	320,0	1	10	0,090	SKS016P20X
20	2,5 (20)	200,0	450,0	1	10	0,174	SKS020P20X
25	2,5 (20)	210,0	440,0	1	10	0,264	SKS025P20X
32	2,5 (20)	230,0	410,0	1	5	0,430	SKS032P20X
40	2,5 (20)	290,0	450,0	1	3	0,786	SKS040P20X



FLANGE ADAPTOR

D ₃	L	D ₁	S	D	☰	☰	⚖	CODE
mm	mm	mm	mm	mm	I.	II.	kg/pc	
40	58,0	80,0	12,5		2	70	0,072	SLN040XXXX
50	60,0	90,0	12,5		2	60	0,102	SLN050XXXX
63	62,0	105,0	13,5		1	40	0,156	SLN063XXXX
75*	73,0	123,0	14,7		1	20	0,205	SLN075RCTX
90*	92,0	140,0	17,0		1	15	0,320	SLN090RCTX
110*	103,0	160,0	19,0		1	10	0,593	SLN110RCTX

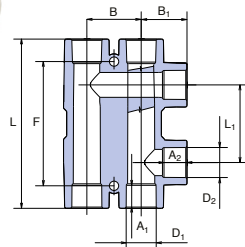


FLANGE ADAPTOR

D	D ₃	L	D ₁	S	A	☰	☰	⚖	CODE
mm	mm	mm	mm	mm	mm	I.	II.	kg/pc	
⊕125*	157,0	54,0	190,0	21,0	40,0	1	10	0,548	SLN125RCT

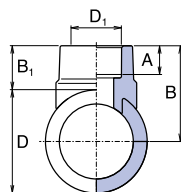
⊕ Information about delivery on request

* material PP-RCT



RADIATOR TURNING

D ₁	D ₂	A ₁	A ₂	L ₁	L	B ₁	B	☰	☰	⚖	CODE
mm	mm	mm	mm	mm	mm	mm	mm	I.	II.	kg/pc	
20	20	14,5	14,5	50	109	29,5	35	1	20	0,098	SRAO02020X
25	20	16,0	14,5	50	115	32,0	45	1	20	0,138	SRAO02520X

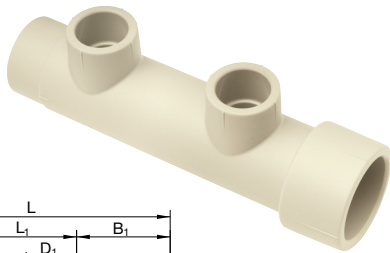


ALL PLASTIC WELD IN SADDLE

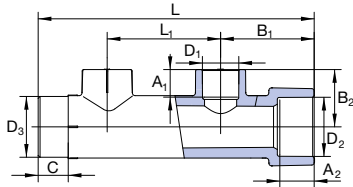
D	D ₁	A	B ₁	B	☰	☰	⚖	CODE
mm	mm	mm	mm	mm	I.	II.	kg/pc	
63	32	18,0	27,0	58,5	10	50	0,021	SNS06332XX
75*	32	18,0	21,3	61,0	10	50	0,022	SNS07532RCT
90*	32	18,0	21,3	69,0	10	50	0,023	SNS09032RCT
110*	32	18,0	25,7	80,7	10	40	0,034	SNS11032RCT
110*	40	21,0	25,7	80,7	10	40	0,036	SNS11032RCT
⊕125*	32	18,0	22,0	84,5	5	40	0,033	SNS12532RCT
⊕125*	40	21,0	28,0	90,5	5	40	0,037	SNS12540RCT
⊕125*	50	23,5	29,5	92,0	1	5	0,042	SNS12550RCT
⊕125*	63	27,5	37,0	99,5	1	5	0,047	SNS12563RCT

⊕ Information about delivery on request

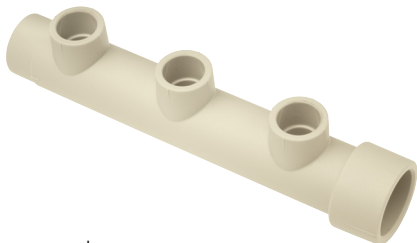
* material PP-RCTT



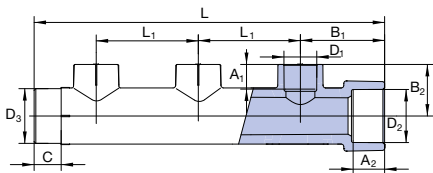
MANIFOLD 2 CIRCUITS PP-RCT



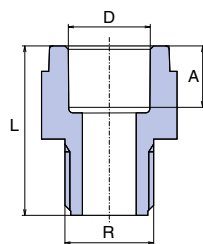
D ₁ mm	D ₂ mm	⊞ I.	⊞ II.	⚖ kg/pc	CODE
16	32	5	20	0,072	SROZ132162RCT
20	32	5	20	0,068	SROZ132202RCT



MANIFOLD 3 CIRCUITS PP-RCT



D ₁ mm	D ₂ mm	⊞ I.	⊞ II.	⚖ kg/pc	CODE
16	32	5	20	0,103	SROZ132163RCT
20	32	5	20	0,097	SROZ132203RCT



ALL-PLASTIC REDUCER MALE THREAD

D mm	R	A mm	L mm	⊞ I.	⊞ II.	⚖ kg/pc	CODE
20	1/2"	14,5	40,0	50	200	0,014	SDG02020XX
20	3/4"	14,5	38,0	50	500	0,012	SDG02025XX
25	3/4"	16,0	42,0	50	300	0,020	SDG02525XX
32	1"	18,0	54,0	25	150	0,038	SDG03232XX
40	5/4"	20,5	62,0	10	100	0,074	SDG04040XX
50	6/4"	23,5	63,0	10	50	0,094	SDG05050XX
63	2"	27,5	81,9	5	35	0,194	SDG06363XX



PLASTIC CLIP

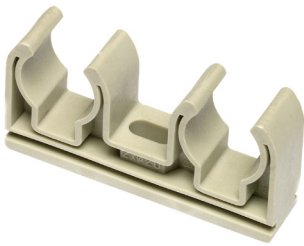
D mm	⊞ I.	⊞ II.	⚖ kg/pc	CODE
16	50	300	0,004	PRE016XXXX
20	50	500	0,004	PRE020XXXX
25	50	500	0,006	PRE025XXXX
32	50	300	0,008	PRE032XXXX



PLASTIC CLIP WITH TAPE

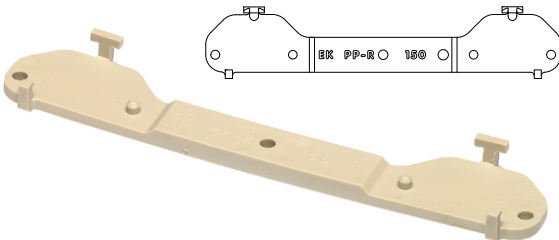
D	☐	☐	⚖️	CODE
mm	I.	II.	kg/pc	
20	50	500	0,008	PRE020XXXN
25	50	500	0,008	PRE025XXXN
32	50	300	0,013	PRE032XXXN
40	50	400	0,016	PRP040XXXX
50	25	100	0,034	PRP050XXXX
63	25	100	0,046	PRP063XXXX
⊕75	1	-	0,084	PRP075XXXX
⊕90	1	-	0,114	PRP090XXXX
⊕110	1	-	0,136	PRP110XXXX

⊕ Information about delivery on request



PLASTIC DOUBLE CLIP

D	☐	⚖️	CODE
mm		kg/pc	
2×20	1	0,016	PRDV0202XX
2×25	1	0,022	PRDV0252XX



HOLDER FOR WALL ELBOWS

D	L	☐	☐	⚖️	CODE
mm	mm	I.	II.	kg/pc	
20	150	10	50	0,026	SDNKXXXXXX

PLUG – SHORT



G	☐	☐	⚖️	CODE
	I.	II.	kg/pc	
1/2"	50	250	0,008	ZAGXXXXXXX

including rubber seal

PLUG – LONG



G	☐	☐	⚖️	CODE
	I.	II.	kg/pc	
1/2"	50	250	0,022	ZAGDXXXXXX

including rubber seal

Product Range – Basic Information

Fittings are manufactured for all piping types in the highest PN 20 pressure range and in various configurations.

- ⦿ Full-plastic fittings (sockets, elbows, T-pieces reduced and full-sized, reducers, blindings, cross-pieces)
- ⦿ Special elements (crossovers, compensation pipes)
- ⦿ Special fittings for heating (radiator turning, manifolds)

Fittings of the Ekoplastik System are produced in the following sizes 16, 20, 25, 32, 40, 50, 63, 75, 90, 110 and 125 mm.

Each class of application refers to a typical field of use and for a period of 50 years. Each class of application must be associated with the pressure it is designed for (operating system pressure). This information is assigned to each pipe in the following format: class of application/pressure, for example 1/10 bar. It means the pipe is categorized as class 1 and has the maximum operating pressure of 10 bar.

The classes of application according to ISO 10508:

- ⦿ **class 1** (supply of hot water of 60 °C, service life 50 years)
- ⦿ **class 2** (supply of hot water of 70 °C, service life 50 years)
- ⦿ **class 4** (floor heating, low temperature heaters, service life 50 years, assuming (in total for the entire lifetime) 2.5 years at the operating temperature of 20 °C, 20 years at the operating temperature of 40 °C, 25 years at the operating temperature of 60 °C, 2.5 years at the operating temperature of 70 °C)
- ⦿ **class 5** (high temperature heaters, service life 50 years, out of which (in total for the entire length of service life) 14 years at the operating temperature of 20 °C, 25 years at the operating temperature of 60 °C, 10 years at the operating temperature of 80 °C, 1 year at the operating temperature 90 °C). Maximum operating pressure (4, 6, 8, 10 bar) corresponding to the application class is calculated and assigned for each material and pipe series S.

All fittings are universal and suitable for all types and pressure lines of Ekoplastik pipes. The operating parameters are specified in the Installation Manual.

Specification of raw material used in production and Properties of Ekoplastik System

Fittings of Ekoplastik System in diameter 16-63 mm are manufactured from polypropylene Type 3, PPR. Fittings in diameter 75-125 mm are manufactured from polypropylene Type 4, PP-RCT.

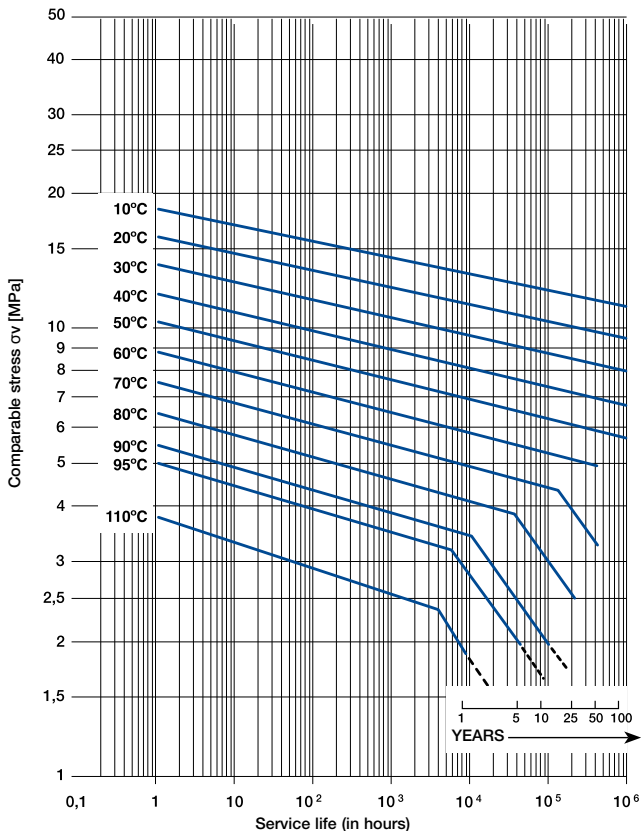
Selected characteristics of pipes

characteristics		units	PPR value
specific gravity	PPR, PP-RCT	g / cm ³	0,9
thermal conductivity coefficient	all types of pipes	W / m °C	0,24

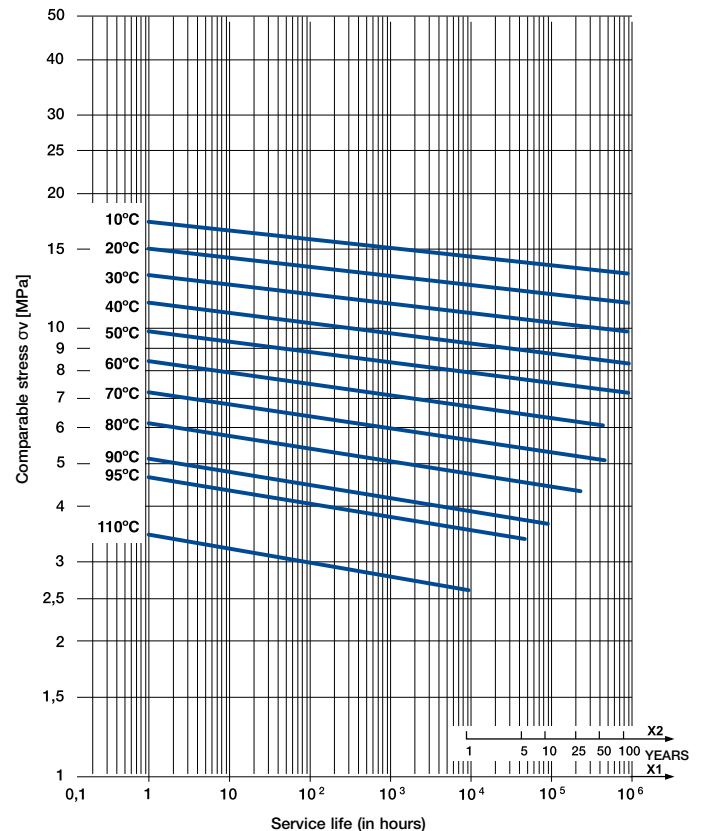
Advantages

- ⊙ Service life of more than 50 years (subject to proper utilisation)
- ⊙ No health risks
- ⊙ No corrosion or encrustation
- ⊙ Flexibility, low weight, easy and clean installation
- ⊙ Low-noise level, low pressure losses due to friction
- ⊙ Environmentally friendly product (can be recycled or safely incinerated)

Isothermal lines for PPR mechanical strength



Isothermal lines for PP-RCT mechanical strength



Termination of the isotherm indicates maximum service life even at lower tensions. The isotherms depicted in the chart are not extended.

Product manufacturing and testing standards

Ekoplastik System products are manufactured according to internal company standard PN 01 corresponding to EN ISO 15874 and German standards DIN 8077 and DIN 8078, DIN 16962, DIN 4726. The internal company standards are continuously being updated with further specification guidelines taken from the newly introduced European (EN) System of Standards.

In order to meet quality requirements specified in ISO 9001, the following activities are regularly controlled within the framework of specified procedures.

Controlled:

- ① characteristics of raw materials entering the manufacturing process
- ① intermediate product parameters at every production stage
- ① manufacturing facilities
- ① parameters of measuring instruments

Warranty

All standard products of the Ekoplastik System are covered by a 10-year warranty period. This guarantee is subject to a proper product application and adherence to the Installation Manual.

Service life

Service life of more than 50 years (subject to proper utilisation).

