

Prestabo

Submittal Package



table of contents

1	Product group description	3
2	Areas of application	6
3	Permitted pipes	7
4	Certificates	8
5	Z dimensions	10
6	Imprint	38

Product group description

Flow-optimised press connector system with press connectors made of non-alloy steel 1.0308. Galvanised (blue chromated) on the outside. Press connectors for protecting the sealing element equipped with cylindrical pipe guide. Press connectors from d64.0 with stainless steel cutting ring to ensure the mechanical strength of the connection. For protection pipes are equipped with pipe plugs. The pressing force is located before and behind the sealing element seat. Suitable for concealed and pre-wall installations of riser pipes and floor installations.

System pipe made of non-alloy steel 1.0308 (E235)

Galvanised (blue chromated) on the outside.
Suitable for heating, solar and cooling systems.

PP-coated system pipe made of non-alloyed steel 1.0308 (E235)

Galvanised (blue chromated) on the outside.
Covered on the outside with a polypropylene (PP) plastic coating in white (RAL 9001).
Suitable for heating, solar and cooling systems.

System pipe made of non-alloy steel 1.0215 (E220)

Hot dip galvanised on the outside and inside.
Suitable for sprinkler and compressed air systems.

Marking

Manufacturer, pipe dimension, batch, red dot on press end, symbol »Not approved for potable water installations«, red line on the pipes, red pipe plug, white pipe plug (hot dip galvanised), detachable orange label as press indicator from d64.0



Press connector with SC-Contur

Inadvertently unpressed connections are noticed immediately during a leakage test.
Viega guarantees the detection of unpressed connections in the following pressure ranges:

min. water pressure: 0.1 MPa / 100kPa / 1 bar / 14.5 PSI

max. water pressure: 0.65 MPa / 650kPa / 6.5 bar / 94.3 PSI

min. air pressure: 22 hPa / 2.2 kPa / 22 mbar / 0.3 PSI

max. air pressure: 0.3 MPa / 300kPa / 3 bar / 43.5 PSI

Sealing elements

EPDM (ethylene propylene diene rubber), black, pre-assembled

Dimensions

d12–108.0, size availability in accordance with the national regulations

Tools

The functional safety of Viega press connector systems depends primarily on the faultless condition of the press tools used. For the manufacture of press connections, Viega recommends the use of Viega press tools. Viega press tools have to be regularly maintained by authorised service partners.

Areas of application

Closed cooling and heating systems
 Industrial and plant engineering
 Sprinkler systems (hot dip galvanised pipe)
 Compressed air systems (hot dip galvanised pipe)
 Solar installations with flat collectors
 Solar installations with vacuum collectors (only with FKM sealing element)

Note

Use of the system for areas of application and media other than those described must be agreed in consultation with Viega! Detailed information about applications, restrictions and national standards and directives can be found in the product information, either printed or on the Viega website.

Note – Standards and approvals

Press connector system with press connectors and pipes in accordance with DIN EN 10305-3.
 For use in heating systems, observe VDI Regulation 2035 and DIN EN 12828.

Operating conditions with EPDM sealing element

operating temperature max. 110 °C / 230 °F
 operating pressure max. 1.6 MPa (PN16) / 1600 kPa / 16 bar / 232 PSI

Material press connector

Steel 1.0308

Note – Storage and transport

To ensure the impeccable quality of Prestabo pipes, observe the following points during transport and storage:
 Packing and protective foil (on with PP coated pipes) should not be removed until immediately before use.
 The pipe ends must be closed with protective caps when delivered.
 Do not store the pipes directly on the bare floor.
 Do not stick any protective foils or plastics to the pipe surfaces.
 When loading and unloading, do not pull the pipes over the truck sill.

Note – Protection against external corrosion

Prestabo pipes and press connectors are protected by external galvanisation.
 In case of contact with dampness (condensation, precipitation during the construction phase, plaster and splash water etc.) or corrosive building materials (surfacers, levelling screed etc.), however this layer of zinc cannot provide permanent protection against external corrosion. the following protective measures are recommended:
 Use of closed-cell insulating tubes with professional sealing of all abutting and cut edges using a suitable filler.
 Damp-proofing of the laid piping through separating foil in the floor construction.
 Installing piping outside areas at risk of moisture.
 Visible radiator connections rising from the floors should be avoided if floors will be frequently cleaned with water and/or cleaning agents/disinfectants, for example in retirement homes and care facilities, as well as hospitals. Wall connections make cleaning easier and also exclude any additional risk of corrosion.
 If the radiator connections do come from the floor, professional corrosion protection and professional sealing of the joints are ensured. If not, there is a possibility that the cleaning water will penetrate, which will moisten the insulation and present the risk of corrosion.
 If the measures in the examples above fail to provide permanent protection against dampness or the areas of use have to meet special requirements, e.g. in cooling circuits, complete external corrosion protection, which reliably prevents influences that lead to corrosion, must be applied.

Viptool software solutions

Software solutions for the service management and detailed planning of Viega piping, pre-wall, flushing and drainage technology.

For a quick and simple solution to specific planning tasks use further free web applications, which can be found on the Viega website.

Pressure gradient calculator

Web application for quick and simple calculation of piping dimensions for potable water, heating and gas supply lines with associated pressure loss tables across the entire system.

Subject to change without prior notice!

Latest Z- and installation dimensions as well as further technical information can be found on the Viega website and have to be checked before purchase, planning, construction work and use. Our products are continuously optimised.

Areas of application

system name: Prestabo, **pipe material:** steel 1.0308

areas of application	properties	values
cooling water (closed circuit) open systems available on request corrosion protection for non-alloyed steel pipes in accordance with AGI Q151	max operating pressure	1.6 MPa / 16 bar / 232.1 psi
	min. operating temperature	-25 °C / -13 °F
	max. operating temperature	110 °C / 230 °F
anti-freeze Antifrogen N / Clariant Antifrogen L / Clariant Antifrogen Sol (solar installations) / Clariant Ethylene glycol (Ethane-1,2-diol) propylene glycol (1.2-propandiol) Tyfoxit / Tyforop Chemie Tyfocor / Tyforop Chemie corrosion protection for non-alloyed steel pipes in accordance with AGI Q151	max operating pressure	1.6 MPa / 16 bar / 232.1 psi
	min. operating temperature	-25 °C / -13 °F
	max. operating temperature	110 °C / 230 °F
heating systems in accordance with DIN EN 12 828	max operating pressure	1.6 MPa / 16 bar / 232.1 psi
	max. operating temperature	105 °C / 221 °F
compressed air oil concentration $\geq 25 \text{ mg/m}^3$ d12-108.0 almost free of condensate	max operating pressure	1.6 MPa / 16 bar / 232.1 psi
	max. operating temperature	60 °C / 140 °F









system name: Prestabo


areas of application	properties	values
compressed air oil concentration $\leq 25 \text{ mg/m}^3$ d12-108.0 almost free of condensate	max operating pressure	1.6 MPa / 16 bar / 232.1 psi
	max. operating temperature	60 °C / 140 °F
compressed air oil concentration $\geq 25 \text{ mg/m}^3$ d12-108.0 sealing elements replaced for FKM almost free of condensate	max operating pressure	1.6 MPa / 16 bar / 232.1 psi
	max. operating temperature	60 °C / 140 °F

Permitted pipes

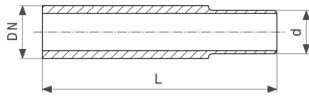
pipe material	Model	Article	external Ø	wall thickness
non-alloyed steel	1103	650 339	12	1.2
non-alloyed steel	1103	559 441	15	1.2
non-alloyed steel	1103	559 458	18	1.2
non-alloyed steel	1103	559 465	22	1.5
non-alloyed steel	1103	559 472	28	1.5
non-alloyed steel	1103	559 496	35	1.5
non-alloyed steel	1103	559 489	42	1.5
non-alloyed steel	1103	559 502	54	1.5
non-alloyed steel	1104	577 117	15	1.5
non-alloyed steel	1104	577 124	18	1.5
non-alloyed steel	1104	577 131	22	1.5
non-alloyed steel	1104	577 148	28	1.5
non-alloyed steel	1104	577 551	35	1.5
non-alloyed steel	1104	577 568	42	1.5
non-alloyed steel	1104	577 575	54	1.5
non-alloyed steel	1106	656 188	15	1.5
non-alloyed steel	1106	656 195	18	1.5
non-alloyed steel	1106	656 201	22	1.5
non-alloyed steel	1106	656 218	28	1.5
non-alloyed steel	1106	656 225	35	1.5
non-alloyed steel	1106	656 232	42	1.5
non-alloyed steel	1106	656 249	54	1.5
non-alloyed steel	1103XL	598 327	64.0	2.0
non-alloyed steel	1103XL	598 334	76.1	2.0
non-alloyed steel	1103XL	598 341	88.9	2.0
non-alloyed steel	1103XL	598 358	108.0	2.0
non-alloyed steel	1106XL	656 287	64.0	2.0
non-alloyed steel	1106XL	656 256	76.1	2.0
non-alloyed steel	1106XL	656 263	88.9	2.0
non-alloyed steel	1106XL	656 270	108.0	2.0

Certificates

RUE Stroy	RUE Stroytechnorm Certificate Prestabo
	VdS Zertifikat Prestabo (d 22 - 108)
	VdTÜV Zertifikat Profipress, Sanpress, Sanpress Inox, Prestabo (d 15 - 108), Temponox
	Bureau Veritas Type Approval Certificate Prestabo
	CSTB Certificate Prestabo
	CSTB QB Certificate Prestabo
	Lloyd's Register Type Approval Certificate Prestabo
EMI	EMI certificate Prestabo
	ITB National Technical Assessment Prestabo
	ITB National Technical Assessment Prestabo

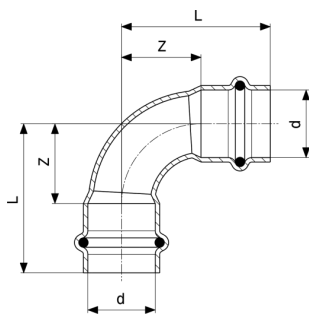
 10	ITB Certificate of Constancy of Performance Prestabo
I.E.S.T. S.R.L.	I.E.S.T. Certificate Prestabo
I.E.S.T. S.R.L.	I.E.S.T. Certificate Prestabo
IZV	IZV Certificate Prestabo

Z dimensions



Prestabo welded piece
- non-alloyed steel, non-galvanised
Model 1105

Article	d	DN	L
641 856	12	10	120
641 863	15	10	120
641 870	18	15	120
641 887	22	20	120
641 894	28	25	120

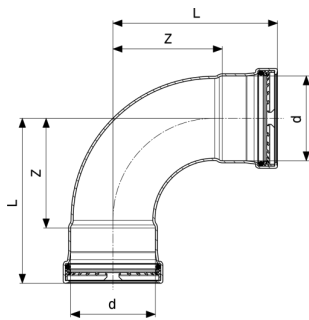


Prestabo elbow 90°
- non-alloyed steel, galvanised
Model 1116

Article	d	Z	L	Z*	L*
605 162	12	14	32	17	35
558 123	15	16	38	26	48
558 130	18	18	40	36	58
558 147	22	26	49	44	67
558 154	28	34	58	48	72
558 161	35	33	59	59	86
558 178	42	50	87	71	107
558 185	54	65	105	92	132

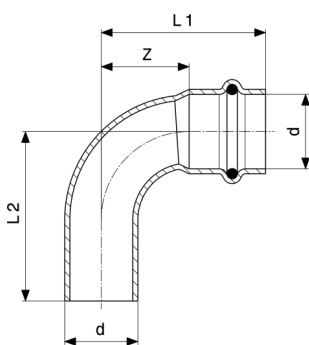
Z* = Z dimension of previous version

L* = Length of previous version



Prestabo XL elbow 90°
- non-alloyed steel, galvanised
Model 1116XL

Article	d	Z	L
597 573	64	84	127
597 566	76.1	99	149
597 580	88.9	115	165
597 597	108	138	198

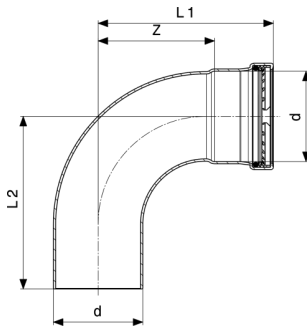


Prestabo elbow 90°
- non-alloyed steel, galvanised
Model 1116.1

Article	d	Z	L1	L2	Z*	L1*	L2*
605 179	12	14	32	33			
558 192	15	16	38	40	26	48	53
558 208	18	18	40	42	30	52	63
558 215	22	26	49	50	37	60	77
558 222	28	34	58	59	48	72	82
558 239	35	33	59	62	59	86	96
558 246	42	50	87	88	71	107	117
558 253	54	65	105	107	92	132	142

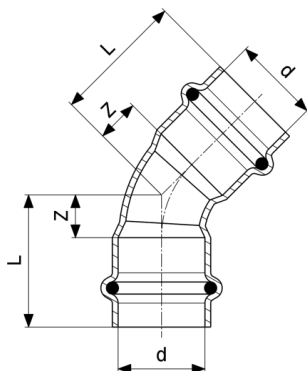
Z* = Z dimension of previous version

L* = Length of previous version



Prestabo XL elbow 90°
 - non-alloyed steel, galvanised
Model 1116.1XL

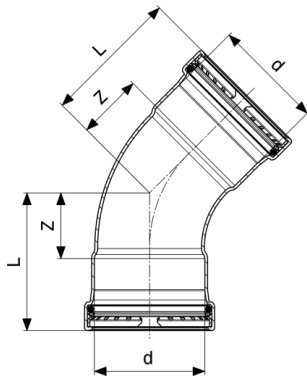
Article	d	Z	L1	L2
597 641	64	84	127	126
597 658	76.1	99	149	147
597 665	88.9	115	165	162
597 672	108	138	198	195



Prestabo elbow 45°
 - non-alloyed steel, galvanised
Model 1126

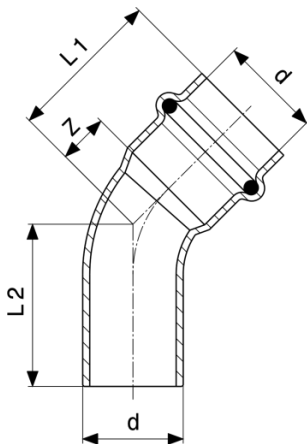
Article	d	Z	L	Z*	L*
604 448	12	7	25		
558 260	15	7	29	13	35
558 277	18	7	29	18	40
558 284	22	11	34	22	45
558 291	28	14	38	21	45
558 307	35	15	41	28	54
558 314	42	21	57	33	69
558 321	54	27	67	44	84

Z* = Z dimension of previous version
 L* = Length of previous version



Prestabo XL elbow 45°
- non-alloyed steel, galvanised
Model 1126XL

Article	d	Z	L
597 603	64	39	82
597 610	76.1	46	96
597 627	88.9	52	102
597 634	108	61	121

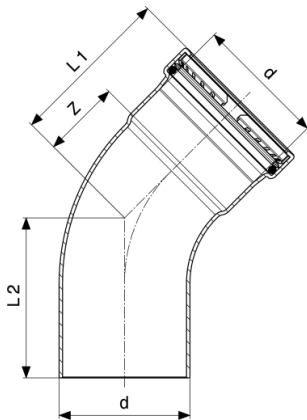


Prestabo elbow 45°
- non-alloyed steel, galvanised
Model 1126.1

Article	d	Z	L1	L2	Z*	L1*	L2*
605 155	12	6	24	25			
558 338	15	7	29	29	13	35	39
558 345	18	7	29	31	15	37	47
558 352	22	11	34	35	17	40	58
558 369	28	14	38	39	21	45	55
558 376	35	15	41	42	28	54	64
558 383	42	21	57	59	34	69	79
558 390	54	27	67	69	44	84	94

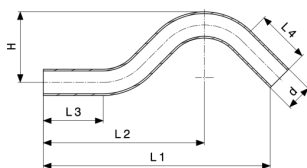
Z* = Z dimension of previous version

L* = Length of previous version



Prestabo XL elbow 45°
- non-alloyed steel, galvanised
Model 1126.1XL

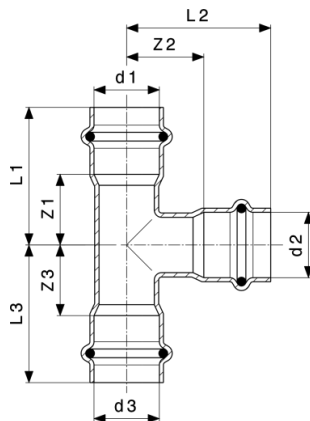
Article	d	Z	L1	L2
597 689	64	39	82	82
597 696	76.1	46	96	93
597 702	88.9	52	102	99
597 719	108	61	121	119



Prestabo crossover
- non-alloyed steel, galvanised
Model 1109.3

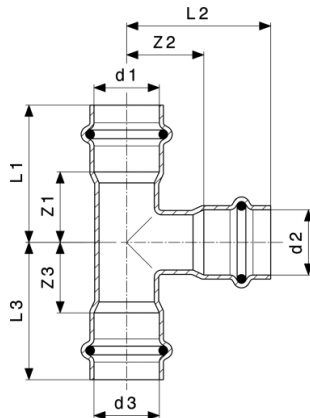
Article	VdS	d	L1	L2	L3	L4	H
605 186		12	132	91	34	35	42
601 232		15	153	104	39	39	48
601 249		18	175	118	45	45	53
601 256	✓	22	197	135	50	45	59

VdS = VdS certification



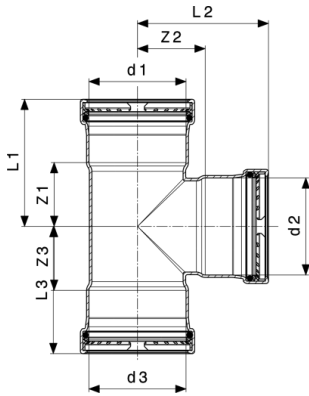
Prestabo T-piece
- non-alloyed steel, galvanised
Model 1118

Article	d1	d2	d3	Z1	Z2	Z3	L1	L2	L3
605 193	12	12	12	18	16	18	36	36	36
605 216	12	15	12	18	22	18	36	44	36
605 209	15	12	15	19	16	19	41	36	41
558 611	15	15	15	19	22	19	41	44	41
642 549	15	18	15	21	17	21	43	39	43
558 857	15	22	15	21	21	21	43	44	43
648 596	18	12	18	21	18	21	43	38	43
558 680	18	15	18	21	23	21	43	45	43
704 681	18	18	15	21	23	19	43	45	41
558 628	18	18	18	21	23	21	43	45	43
558 864	18	22	18	24	21	24	46	44	46
648 602	22	12	22	22	20	22	45	40	45
642 617	22	15	15	22	25	21	45	47	43
558 697	22	15	22	22	25	22	45	47	45
642 648	22	18	18	22	25	23	45	47	45
558 703	22	18	22	22	25	22	45	47	45
642 655	22	22	15	23	27	26	46	50	48
558 635	22	22	22	24	27	24	47	50	47
558 871	22	28	22	24	23	24	47	47	47
558 710	28	15	28	21	29	21	45	51	45
558 727	28	18	28	21	29	21	45	51	45
642 693	28	22	22	23	31	27	47	54	50
558 734	28	22	28	23	31	23	47	54	47
558 642	28	28	28	28	29	28	52	53	52
558 741	35	15	35	19	33	19	45	55	45
558 758	35	18	35	19	33	19	45	55	45



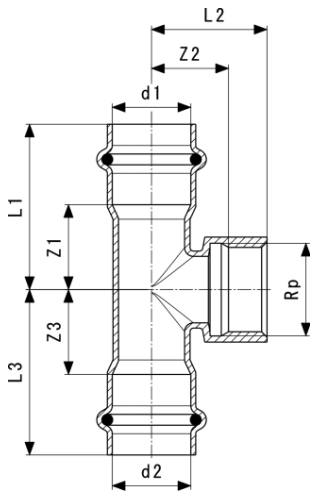
Prestabo T-piece
- non-alloyed steel, galvanised
Model 1118

Article	d1	d2	d3	Z1	Z2	Z3	L1	L2	L3
558 765	35	22	35	21	34	21	47	57	47
558 772	35	28	35	27	33	27	53	57	53
558 659	35	35	35	27	27	27	53	53	53
642 556	42	15	42	19	36	19	55	58	55
704 698	42	18	42	19	36	19	55	58	55
558 789	42	22	42	19	38	19	55	61	55
558 796	42	28	42	25	37	25	61	61	61
558 802	42	35	42	25	30	25	61	56	61
558 666	42	42	42	32	32	32	68	68	68
642 570	54	15	54	18	43	18	58	65	58
723 682	54	18	54	18	43	18	58	65	58
558 819	54	22	54	18	44	18	58	67	58
558 826	54	28	54	21	43	21	61	67	61
558 833	54	35	54	25	36	25	65	62	65
558 840	54	42	54	29	38	29	69	74	69
558 673	54	54	54	39	39	39	79	79	79



Prestabo XL T-piece
 - non-alloyed steel, galvanised
Model 1118XL

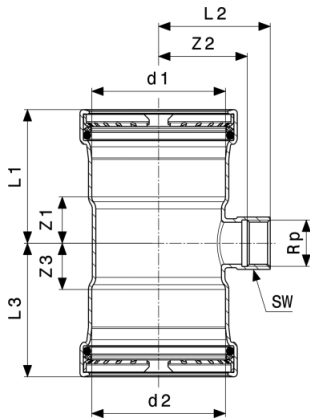
Article	d1	d2	d3	Z1	Z2	Z3	L1	L2	L3
597 849	64	28	64	27	41	27	70	65	70
597 856	64	35	64	32	42	32	75	68	75
597 863	64	42	64	35	44	35	78	80	78
597 870	64	54	64	41	44	41	84	84	84
597 801	64	64	64	46	48	46	89	91	89
597 887	76.1	28	76.1	27	47	27	77	71	77
597 894	76.1	35	76.1	30	48	30	80	74	80
597 900	76.1	42	76.1	34	49	34	84	86	84
597 917	76.1	54	76.1	40	51	40	90	91	90
597 924	76.1	64	76.1	51	53	51	101	96	101
597 818	76.1	76.1	76.1	51	55	51	101	105	101
597 931	88.9	28	88.9	27	54	27	77	78	77
597 948	88.9	35	88.9	30	54	30	80	81	80
597 955	88.9	42	88.9	34	56	34	84	92	84
597 962	88.9	54	88.9	40	57	40	90	97	90
597 979	88.9	64	88.9	51	60	51	101	103	101
597 986	88.9	76.1	88.9	51	61	51	101	111	101
597 825	88.9	88.9	88.9	57	59	57	107	109	107
597 993	108	28	108	27	63	27	87	87	87
598 006	108	35	108	30	64	30	90	90	90
598 013	108	42	108	34	66	34	94	102	94
598 020	108	54	108	40	67	40	100	107	100
598 037	108	64	108	51	70	51	111	113	111
598 044	108	76.1	108	51	71	51	111	121	111
598 051	108	88.9	108	57	69	57	117	119	117
597 832	108	108	108	67	69	67	127	129	127



Prestabo T-piece
- non-alloyed steel, galvanised
Model 1117.2

Article	d1	Rp	d2	Z1	Z2	Z3	L1	L2	L3	SW
605 230	12	½	12	23	14	23	41	29	41	24
558 888	15	½	15	19	14	19	41	29	41	24
558 895	18	½	18	21	15	21	43	30	43	24
558 901	22	½	22	22	17	22	45	32	45	24
641 962	22	¾	22	24	18	24	47	34	47	30
558 918	28	½	28	21	21	21	45	36	45	24
558 925	28	¾	28	23	22	23	47	38	47	30
688 134	28	1	28	28	20	28	52	40	52	36
558 932	35	½	35	19	25	19	45	40	45	24
558 949	35	¾	35	19	26	19	45	42	45	30
558 956	42	½	42	19	28	19	55	43	55	24
558 963	42	¾	42	19	29	19	55	45	55	30
558 970	54	½	54	18	34	18	58	49	58	24
558 987	54	¾	54	18	35	18	58	51	58	30
704 704	54	1	54	21	34	21	61	53	61	36

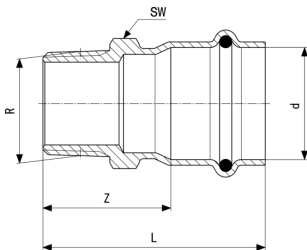
SW = Spanner width



Prestabo XL T-piece
 - non-alloyed steel, galvanised
Model 1117.2XL

Article	d1	Rp	d2	Z1	Z2	Z3	L1	L2	L3	SW
598 068	64	¾	64	27	42	27	70	55	70	30
598 075	76.1	¾	76.1	27	51	27	77	62	77	30
598 082	88.9	¾	88.9	27	55	27	77	68	77	30
598 099	108	¾	108	24	67	24	81	78	81	30

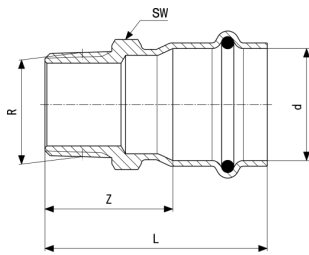
SW = Spanner width



Prestabo adapter
 - non-alloyed steel, galvanised
Model 1111

Article	d	R	Z	L	SW
605 247	12	⅝	22	40	19
648 626	12	½	25	43	22
558 994	15	⅝	20	42	19
559 007	15	½	24	46	22
641 979	15	¾	27	49	27
559 014	18	½	24	46	22
559 021	18	¾	27	49	27
641 986	22	½	25	48	27
559 038	22	¾	26	49	27
704 797	22	1	28	51	34
721 428	28	½	26	50	34
641 993	28	¾	28	52	34

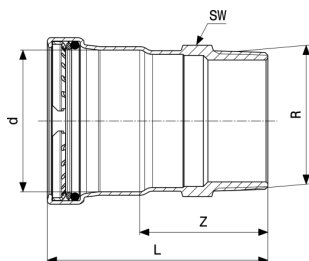
SW = Spanner width



Prestabo adapter
- non-alloyed steel, galvanised
Model 1111

Article	d	R	Z	L	SW
559 045	28	1	27	51	34
642 006	28	1¼	38	62	43
704 803	35	1	31	57	36
559 052	35	1¼	36	62	46
642 013	35	1½	39	65	50
704 810	42	1¼	45	81	43
559 069	42	1½	45	81	50
588 663	54	2	51	91	62

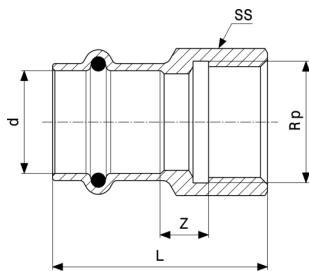
SW = Spanner width



Prestabo XL adapter
- non-alloyed steel, galvanised
Model 1111XL

Article	d	R	Z	L	SW
629 953	64	2	54	97	65
629 960	64	2½	65	108	60
629 977	76.1	2½	64	114	80
629 984	88.9	3	68	118	90
629 991	108	4	74	134	114

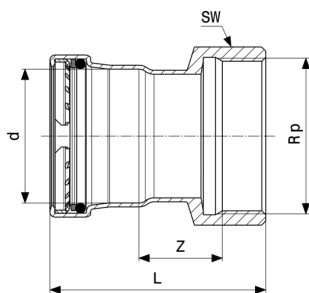
SW = Spanner width



Prestabo adapter
 - non-alloyed steel, galvanised
Model 1112

Article	d	Rp	Z	L	SW
648 633	12	3/8	6	34	22
605 254	12	1/2	8	38	24
642 136	15	3/8	5	37	22
559 557	15	1/2	9	41	24
642 143	15	3/4	12	45	30
559 090	18	1/2	9	41	24
559 106	18	3/4	11	44	34
642 150	22	1/2	6	41	27
559 113	22	3/4	11	45	34
642 167	22	1	9	48	36
704 759	28	1/2	3	38	38
642 181	28	3/4	6	44	32
559 120	28	1	12	48	38
642 198	35	3/4	4	43	46
704 766	35	1	2	43	46
642 204	35	1 1/4	9	53	46
704 773	42	1 1/4	20	71	46
642 211	42	1 1/2	20	71	53
642 228	54	2	24	82	65

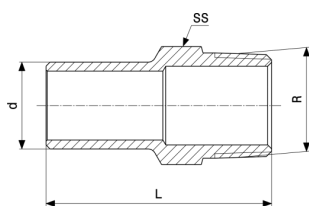
SW = Spanner width



Prestabo XL adapter
- non-alloyed steel, galvanised
Model 1112XL

Article	d	Rp	Z	L	SW
630 003	64	2	20	88	65
630 010	64	2½	25	98	82
630 034	76.1	2½	24	105	82
630 041	88.9	3	30	114	100
630 027	108	4	35	134	120

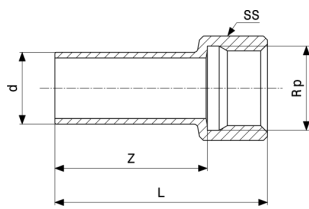
SW = Spanner width



Prestabo plug-in piece
- non-alloyed steel, galvanised
Model 1111.1

Article	d	R	L	SW
605 261	12	⅜	46	19
605 278	12	½	50	22
642 044	15	½	51	22
642 051	18	½	50	22
642 082	22	¾	54	27
642 099	28	1	58	34

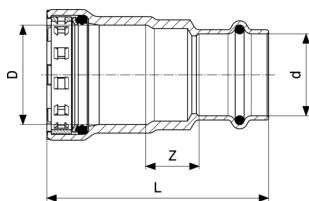
SW = Spanner width



Prestabo plug-in piece
- non-alloyed steel, galvanised
Model 1112.1

Article	d	Rp	Z	L	SW
559 137	15	½	32	47	27
559 144	18	½	31	46	27
559 151	18	¾	33	50	30
559 168	22	½	31	46	27
559 175	22	¾	33	50	30
704 780	28	1	37	49	36

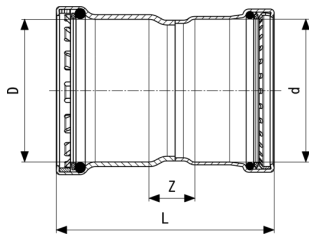
SW = Spanner width



Megapress adapter
- non-alloyed steel, zinc-nickel coating
Model 4213

Article	VdS	DN	D	d	Z	L
740 207		10	⅝	15	18	64
718 787		15	½	15	19	68
767 600		15	½	18	18	67
734 121		20	¾	15	22	73
718 794	✓	20	¾	22	19	71
734 138		25	1	15	23	79
718 800	✓	25	1	28	19	77
718 817	✓	32	1¼	35	19	91
718 824	✓	40	1½	42	19	102
718 831	✓	50	2	54	21	111

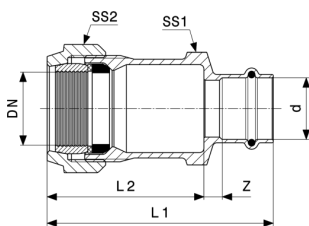
VdS = VdS certification



Megapress S XL adapter
- non-alloyed steel, zinc-nickel coating
Model 4213XL

Article	VdS	DN	D	d	Z	L
793 739	✓	65	2½	76.1	28	124
793 746	✓	80	3	88.9	29	138
794 057	✓	100	4	108	41	181

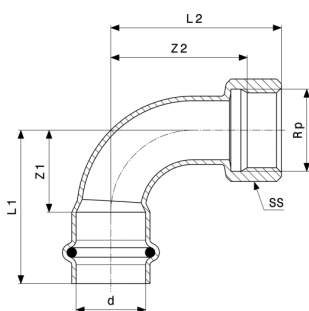
VdS = VdS certification



Sanpress adapter union
- gunmetal or silicon bronze
Model 2215.6

Article	DN	d	Z	L1	L2	SW1	SW2
588 564	25	28	9	104	73	50	55
588 328	32	35	9	112	73	68	70

SW = Spanner width



Prestabo adapter elbow 90°
- non-alloyed steel, galvanised
Model 1114

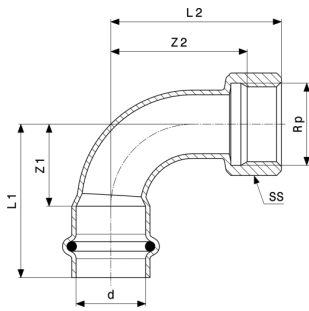
Article	d	R	Z	L1	L2	SW	Z*	L1*	L2*	SW*
605 346	12	¾	18	36	40	19				
648 640	12	½	18	36	43	22				
558 406	15	¾	16	38	41	19	18	40	38	19

SW = Spanner width

Z* = Z dimension of previous version

L* = Length of previous version

SW* = Previous version (spanner width)



Prestabo adapter elbow 90°
- non-alloyed steel, galvanised
Model 1114

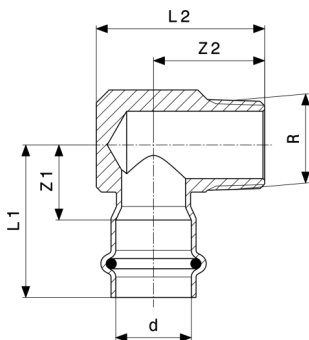
Article	d	R	Z	L1	L2	SW	Z*	L1*	L2*	SW*
558 413	15	½	16	38	44	22	18	40	41	22
558 420	18	½	18	40	46	22	22	53	43	30
704 643	22	½	26	49	58	22				
558 437	22	¾	26	49	61	27				
558 444	28	1	34	58	77	36				
558 451	35	1¼	33	58	78	46	46	86	91	59
558 468	42	1½	50	87	102	50				
558 475	54	2	65	105	121	62				

SW = Spanner width

Z* = Z dimension of previous version

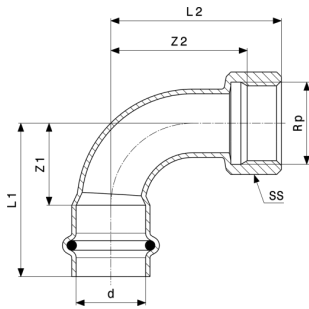
L* = Length of previous version

SW* = Previous version (spanner width)



Prestabo adapter elbow 90°
- non-alloyed steel, galvanised
Model 1114.1

Article	d	R	Z1	Z2	L1	L2
605 360	12	⅜	19	24	39	36
649 951	12	½	21	28	41	40
559 519	15	⅜	18	24	40	36
559 526	15	½	19	28	41	40
559 533	18	½	19	28	41	40
559 540	22	¾	22	33	45	50
704 667	28	1	25	36	49	55

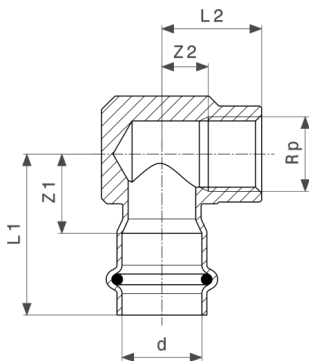


Prestabo adapter elbow 90°
- non-alloyed steel, galvanised
Model 1114.5

Article	VdS	d	Rp	Z1	Z2	L1	L2	SW
605 353		12	¾	17	21	36	33	22
651 398		12	½	18	23	36	38	24
601 300		15	½	16	24	38	39	24
601 317		18	½	18	27	40	42	26
704 650	✓	22	½	26	39	49	54	24
601 324	✓	22	¾	26	39	49	55	30
601 331	✓	28	1	34	51	58	70	36

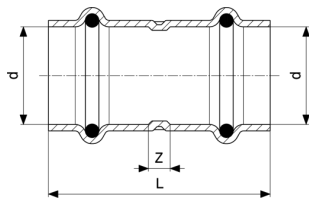
VdS = VdS certification

SW = Spanner width



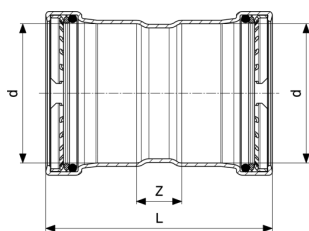
Prestabo adapter elbow 90°
- non-alloyed steel, galvanised
Model 1114.2

Article	d	Rp	Z1	Z2	L1	L2
651 404	12	½	24	10	44	25
656 478	15	½	20	10	42	25
601 263	22	½	22	13	45	28
601 270	22	¾	25	13	48	30
601 287	28	½	22	16	46	31
601 294	28	¾	25	16	49	33
642 310	28	1	27	17	51	36



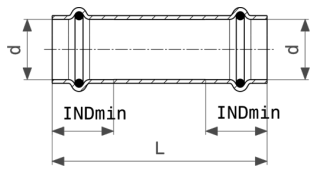
Prestabo coupling
- non-alloyed steel, galvanised
Model 1115

Article	d	Z	L
604 424	12	1	39
557 980	15	12	56
557 997	18	11	55
558 000	22	12	58
558 017	28	12	60
558 024	35	12	64
558 031	42	12	85
558 048	54	12	93



Prestabo XL coupling
- non-alloyed steel, galvanised
Model 1115XL

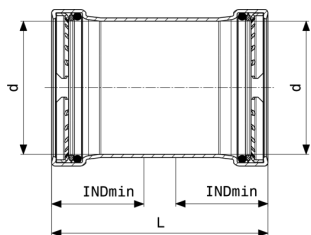
Article	d	Z	L
597 726	64	24	110
597 733	76.1	25	125
597 740	88.9	25	125
597 757	108	25	145



Prestabo slip coupling
- non-alloyed steel, galvanised
Model 1115.5

Article	d	L	INDmin
604 431	12	71	18
558 055	15	81	22
558 062	18	81	22
558 079	22	81	23
558 086	28	96	24
558 093	35	106	26
558 109	42	121	36
558 116	54	136	40

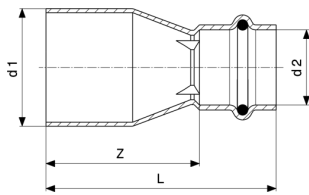
INDmin = Minimum insertion depth



Prestabo XL slip coupling
- non-alloyed steel, galvanised
Model 1115.5XL

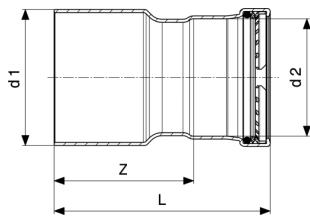
Article	d	L	INDmin
597 764	64	110	43
597 771	76.1	125	50
597 788	88.9	125	50
597 795	108	145	60

INDmin = Minimum insertion depth



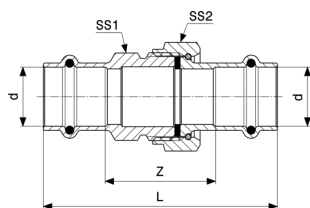
Prestabo reducer
- non-alloyed steel, galvanised
Model 1115.1

Article	d1	d2	Z	L
605 315	15	12	28	48
605 322	18	12	30	50
558 499	18	15	30	52
605 339	22	12	35	55
558 505	22	15	35	57
558 512	22	18	37	59
558 529	28	15	50	72
558 536	28	18	47	69
558 543	28	22	42	65
642 730	35	15	56	78
558 550	35	22	50	74
558 567	35	28	43	67
642 761	42	22	65	88
642 778	42	28	66	90
558 574	42	35	54	80
704 728	54	18	90	112
558 581	54	22	90	113
558 598	54	28	85	109
642 792	54	35	81	107
558 604	54	42	65	101



Prestabo XL reducer
- non-alloyed steel, galvanised
Model 1115.1XL

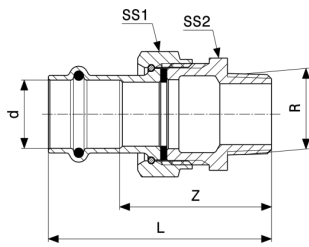
Article	d1	d2	Z	L
598 105	64	54	71	111
704 742	76.1	35	88	114
704 735	76.1	42	86	123
598 129	76.1	54	83	123
598 112	76.1	64	82	125
598 136	88.9	54	90	130
598 143	88.9	64	89	132
598 150	88.9	76.1	82	132
598 167	108	54	110	150
598 174	108	64	109	152
598 181	108	76.1	101	151
598 198	108	88.9	95	145



Prestabo screw fitting
- non-alloyed steel, galvanised
Model 1160

Article	d	Z	L	SW1	SW2
642 358	12	32	68	24	24
559 304	15	33	77	30	30
559 311	18	35	79	30	30
559 328	22	38	84	36	37
559 335	28	43	91	46	46
559 342	35	43	95	50	53
559 359	42	43	115	55	60
559 366	54	53	133	70	78

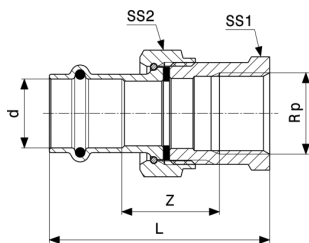
SW = Spanner width



Prestabo adapter union
- non-alloyed steel, galvanised
Model 1165

Article	d	R	Z	L	SW1	SW2
559 243	15	½	45	67	30	27
752 637	18	¾	48	70	30	27
559 250	22	¾	54	77	30	27
642 341	22	1	53	76	37	34
559 267	28	1	63	87	37	34
559 274	35	1¼	58	84	53	50
559 281	42	1½	59	95	60	55
559 298	54	2	69	109	78	72

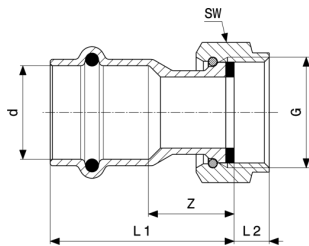
SW = Spanner width



Prestabo adapter union
- non-alloyed steel, galvanised
Model 1162

Article	d	Rp	Z	L	SW1	SW2
641 849	15	½	27	64	30	27
643 454	18	½	28	65	30	27
643 461	22	¾	37	76	30	32
643 478	22	1	35	77	37	41
643 485	28	1	45	88	37	41
643 492	35	1¼	30	78	53	50
643 508	42	1½	34	91	60	55
643 515	54	2	21	87	78	70

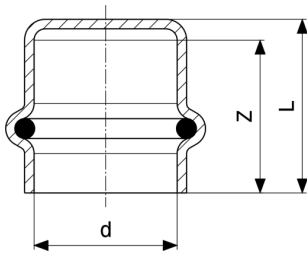
SW = Spanner width



Prestabo connection screw fitting
 - non-alloyed steel, galvanised
Model 1163

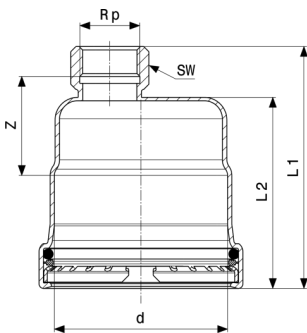
Article	VdS	d	G	Z	L1	L2	SW
752 613		15	½	15	44	7	24
559 182		15	¾	12	43	9	30
601 058		15	1	11	41	8	36
704 827		18	¾	14	44	9	30
601 065		18	1	11	41	8	36
693 091	✓	22	¾	19	51	9	30
559 199	✓	22	1	12	44	9	37
601 072	✓	22	1¼	13	47	11	50
601 089	✓	22	1½	14	48	11	52
559 205	✓	28	1¼	14	48	11	46
752 620	✓	28	1	22	55	9	37
601 102	✓	28	1½	15	50	11	52
559 212	✓	35	1½	13	49	11	53
601 119	✓	35	2	14	51	12	65
559 229	✓	42	1¾	12	59	11	60
601 126	✓	42	2	20	70	14	66
559 236	✓	54	2¾	15	68	13	78
601 133	✓	54	2½	17	72	16	84

VdS = VdS certification
 SW = Spanner width



Prestabo cap
- non-alloyed steel, galvanised
Model 1156

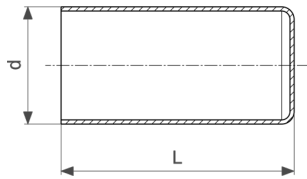
Article	d	Z	L
643 577	12	18	21
643 584	15	23	26
643 591	18	22	26
643 607	22	24	27
643 614	28	25	28
643 621	35	27	31
643 638	42	36	41
643 645	54	40	44



Prestabo XL cap
- non-alloyed steel, galvanised
Model 1156XL

Article	d	Rp	Z	L1	L2	SW
598 242	64	¾	44	98	77	30
598 259	76.1	¾	43	104	84	30
598 266	88.9	¾	44	105	85	30
598 273	108	¾	44	115	95	30

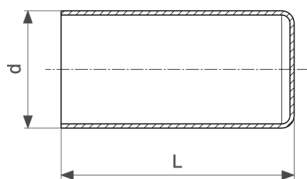
SW = Spanner width



Prestabo long plug
- non-alloyed steel, galvanised
Model 1157.1

Article	VdS	d	L
605 308		12	47
559 373		15	55
559 380		18	55
559 397	✓	22	57
559 403	✓	28	59
559 410	✓	35	64
559 427	✓	42	84
559 434	✓	54	92

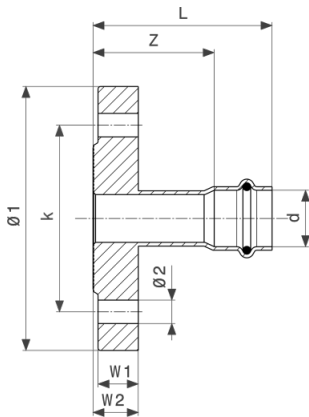
VdS = VdS certification



Prestabo XL long plug
- non-alloyed steel, galvanised
Model 1157.1XL

Article	VdS	d	L
598 280	✓	64	123
598 297	✓	76.1	135
598 303	✓	88.9	137
598 310	✓	108	157

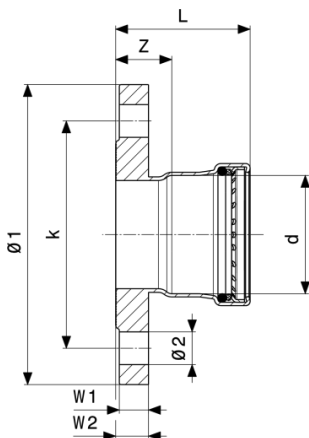
VdS = VdS certification



Prestabo flange adapter
- non-alloyed steel, galvanised
Model 1159.1

Article	DN	d	Z	L	W1	W2	Ø1	k	Ø2	n
642 389	32	35	40	66	12	14	120	90	14	4
642 396	40	42	53	89	12	14	130	100	14	4
642 402	50	54	53	93	12	14	140	110	14	4

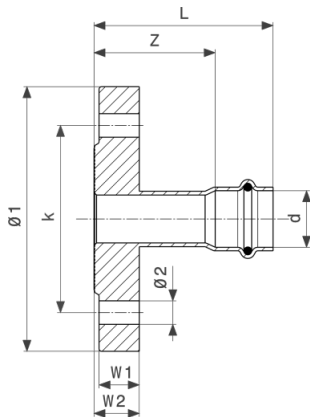
k = Bolt circle Ø
n = Number of drill holes



Prestabo XL flange adapter
- non-alloyed steel, galvanised
Model 1159.1XL

Article	DN	d	Z	L	W1	W2	Ø1	k	Ø2	n
630 058	50	64	27	70	12	14	140	110	14	4
629 939	65	64	27	70	12	14	160	130	14	4
629 946	65	76.1	26	76	12	14	160	130	14	4
629 915	80	88.9	28	78	14	16	190	150	18	4
629 922	100	108	28	88	14	16	210	170	18	4

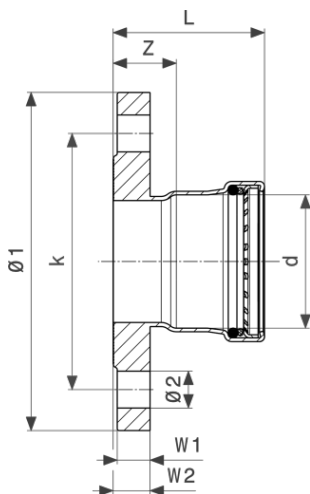
k = Bolt circle Ø
n = Number of drill holes



Prestabo flange adapter
- non-alloyed steel, galvanised
Model 1159

Article	DN	d	Z	L	W1	W2	Ø1	k	Ø2	n
643 546	32	35	44	70	16	18	140	100	18	4
643 553	40	42	57	93	16	18	150	110	18	4
643 560	50	54	57	97	16	18	165	125	18	4

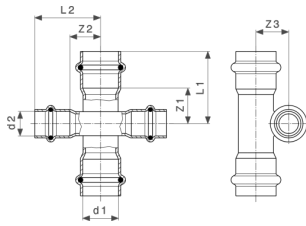
k = Bolt circle Ø
n = Number of drill holes



Prestabo XL flange adapter
- non-alloyed steel, galvanised
Model 1159XL

Article	DN	d	Z	L	W1	W2	Ø1	k	Ø2	n
598 204	65	64	31	74	16	18	185	145	18	8
598 211	65	76.1	30	80	16	18	185	145	18	8
598 228	80	88.9	31	81	18	20	200	160	18	8
598 235	100	108	31	91	18	20	220	180	18	8

k = Bolt circle Ø
n = Number of drill holes



Prestabo cross piece
 - non-alloyed steel, galvanised
Model 1148

Article	d1	d2	Z1	Z2	Z3	L1	L2
601 157	18	15	21	19	19	43	41
601 164	22	15	22	19	21	45	41
601 171	28	15	21	19	25	45	41

Imprint

Viega GmbH & Co. KG

Viega Platz 1
57439 Attendorn
Germany
Phone: +49/2722/61-0
Fax: +49/2722/61-1566

The Viega GmbH & Co. KG is represented by the general partners: Viega Management B.V. (Managing directors: Michael Klenz, Sebastian Lelgemann) and Viega Management GmbH (Managing directors: Michael Klenz, Sebastian Lelgemann)

The Submittal Package contains non-binding information that is being provided to you. All contents in the Submittal Package have been compiled with the greatest possible care and attention. Despite this, we are unable to guarantee that the information is up to date, accurate and complete. Placing an order does not automatically render the Submittal Package part of the contract.