

Profipress S

Submittal Package



table of contents

| | | |
|---|---------------------------|----|
| 1 | Product group description | 3 |
| 2 | Areas of application | 5 |
| 3 | Permitted pipes | 7 |
| 4 | Certificates | 8 |
| 5 | Z dimensions | 9 |
| 6 | Imprint | 16 |

Product group description

Flow-optimised press connector system made of copper (99.9 % Cu-DHP), gunmetal or silicon bronze for copper pipes. Press connectors for protecting the sealing element equipped with cylindrical pipe guide. The pressing force is located before and behind the sealing element seat. Suitable for concealed and pre-wall installations of riser pipes and floor installations.

Marking

Manufacturer, pipe dimension, batch, approval markings (DVGW), white dot on press end, white rectangle with inscription »FKM«

Press connector with SC-Contur

Inadvertently unpressed connections are noticed immediately during a leakage test.

Viega guarantees the detection of unpressed connections in the following pressure ranges:

min. water pressure: 0.1 MPa / 100kPa / 1 bar / 14.5 PSI

max. water pressure: 0.65 MPa / 650kPa / 6.5 bar / 94.3 PSI

min. air pressure: 22 hPa / 2.2 kPa / 22 mbar / 0.3 PSI

max. air pressure: 0.3 MPa / 300kPa / 3 bar / 43.5 PSI

Sealing elements

FKM (fluorocarbon rubber), matt black, pre-assembled

The use of Profipress S and Profipress connectors with FKM sealing elements in potable water and gas installations is not permitted!

Dimensions

d12–35

Tools

The functional safety of Viega press connector systems depends primarily on the faultless condition of the press tools used. For the manufacture of press connections, Viega recommends the use of Viega press tools. Viega press tools have to be regularly maintained by authorised service partners.

Areas of application

Solar installations (flat plate/vacuum collector)

District heat supply systems

Low-pressure steam systems

Use for systems with additives (e.g. anti-corrosion or anti-freeze agents in heating water) or areas of application other than those described must be approved by Viega.

Note

Use of the system for areas of application and media other than those described must be agreed in consultation with Viega! Detailed information about applications, restrictions and national standards and directives can be found in the product information, either printed or on the Viega website.

Note – Standards and approvals

Press connectors tested in accordance with DVGW Worksheet W 534 with DVGW test mark.

Press connectors suitable for copper pipes in accordance with DIN EN 1057 and DVGW Worksheet GW 392.

Operating conditions solar installations (flat plate/vacuum collectors)

operating temperature max. 140 °C / 284 °F; short-term max. 280 °C / 536 °F

operating pressure max. 0.6 MPa / 6 bar / 87 PSI

Operating conditions district heat supply systems

operating temperature max. 140 °C / 284 °F
 operating pressure max. 1.6 MPa / 16 bar / 232 PSI

Operating conditions low-pressure steam systems

operating temperature max. 120 °C / 248 °F
 operating pressure max. 0.1 MPa / 1 bar / 14.5 PSI

Material press connector

Copper: 99.9 % Cu-DHP
 gunmetal: CC499K
 silicon bronze: CC246E / CuSi4Zn9MnP

Viptool software solutions

Software solutions for the service management and detailed planning of Viega piping, pre-wall, flushing and drainage technology.

For a quick and simple solution to specific planning tasks use further free web applications, which can be found on the Viega website.

Pressure gradient calculator

Web application for quick and simple calculation of piping dimensions for potable water, heating and gas supply lines with associated pressure loss tables across the entire system.

Subject to change without prior notice!

Latest Z- and installation dimensions as well as further technical information can be found on the Viega website and have to be checked before purchase, planning, construction work and use. Our products are continuously optimised.

Areas of application

system name: Profipress S

| areas of application | properties | values |
|---|----------------------------|------------------------------|
| cooling water (closed circuit) | max operating pressure | 1.6 MPa / 16 bar / 232.1 psi |
| | min. operating temperature | -5 °C / 23 °F |
| | max. operating temperature | 140 °C / 284 °F |
| vapour low-pressure steam systems without additives | max operating pressure | 0.1 MPa / 1 bar / 14.5 psi |
| | max. operating temperature | 120 °C / 248 °F |
| heating systems in accordance with DIN EN 12 828 for operating temperatures of -5 °C to +140 °C | max operating pressure | 1 MPa / 10 bar / 145 psi |
| | min. operating temperature | -5 °C / 23 °F |
| | max. operating temperature | 140 °C / 284 °F |
| anti-freeze Antifrogen N / Clariant Antifrogen L / Clariant Antifrogen Sol (solar installations) / Clariant Ethylene glycol (Ethane-1,2-diol) propylene glycol (1.2-propandiol) Tyfoxit / Tyforop Chemie Tyfocor / Tyforop Chemie | max operating pressure | 1.6 MPa / 16 bar / 232.1 psi |
| | min. operating temperature | -5 °C / 23 °F |
| | max. operating temperature | 140 °C / 284 °F |
| Argon d12-54 | max operating pressure | 1.6 MPa / 16 bar / 232.1 psi |
| | max. operating temperature | 60 °C / 140 °F |
| Argon d64.0-108.0 | max operating pressure | 1 MPa / 10 bar / 145 psi |
| | max. operating temperature | 60 °C / 140 °F |
| Carbogen carbon dioxide + oxygen dry d12-54 | max operating pressure | 1.6 MPa / 16 bar / 232.1 psi |
| | max. operating temperature | 60 °C / 140 °F |
| Carbogen d64.0-108.0 | max operating pressure | 1 MPa / 10 bar / 145 psi |
| | max. operating temperature | 60 °C / 140 °F |
| compressed air oil concentration <= 25 mg/m ³ d12-108.0 | max operating pressure | 1.6 MPa / 16 bar / 232.1 psi |
| | max. operating temperature | 60 °C / 140 °F |
| compressed air oil concentration >= 25 mg/m ³ d12-108.0 | max operating pressure | 1.6 MPa / 16 bar / 232.1 psi |
| | max. operating temperature | 60 °C / 140 °F |
| Nitrogen downstream of the vaporiser d12-54 | max operating pressure | 1.6 MPa / 16 bar / 232.1 psi |
| | max. operating temperature | 60 °C / 140 °F |
| Nitrogen d64.0-108.0 | max operating pressure | 1 MPa / 10 bar / 145 psi |
| | max. operating temperature | 60 °C / 140 °F |

system name: Profipress S

| areas of application | properties | values |
|---|----------------------------|------------------------------|
| Coarse vacuum P (absolute) = 1hPa | max. operating temperature | 70 °C / 158 °F |
| forming gas (dry/inert gas) Argon + carbon dioxide (example Corgon) d12-54 | max operating pressure | 1.6 MPa / 16 bar / 232.1 psi |
| | max. operating temperature | 60 °C / 140 °F |
| forming gas (dry/inert gas) d64.0-108.0 | max operating pressure | 1 MPa / 10 bar / 145 psi |
| | max. operating temperature | 60 °C / 140 °F |
| synthetic air d12-54 | max operating pressure | 1.6 MPa / 16 bar / 232.1 psi |
| | max. operating temperature | 60 °C / 140 °F |
| synthetic air d64.0-108.0 | max operating pressure | 1 MPa / 10 bar / 145 psi |
| | max. operating temperature | 60 °C / 140 °F |

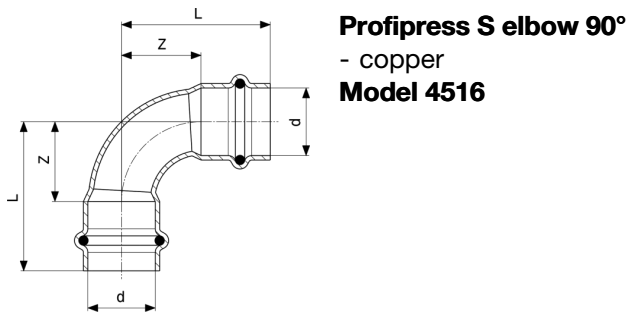
Permitted pipes

| standard | DN | external Ø | wall thickness |
|-----------------------|-----|------------|----------------|
| copper DIN EN 1057 | 10 | 12 | 0.8 1.0 |
| | 12 | 15 | 1.0 |
| | 15 | 18 | |
| | 20 | 22 | |
| | 25 | 28 | 1.0 1.5 |
| | 32 | 35 | 1.2 1.5 |
| | 40 | 42 | |
| | 50 | 54 | 1.5 2.0 |
| | 60 | 64.0 | 2.0 |
| | 65 | 76.1 | |
| | 80 | 88.9 | |
| | 100 | 108.0 | 2.5 |

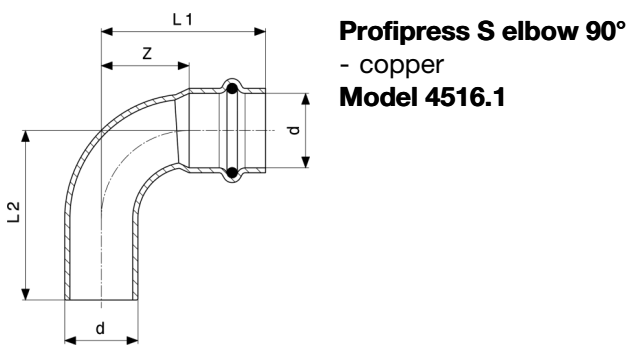
Certificates

| | |
|---|---|
| SZU | SZU Certificate Profipress, Profipress S |
|  10 | ITB National Technical Assessment Profipress, Profipress XL, Profipress S |

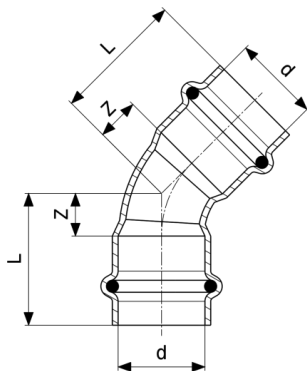
Z dimensions



| Article | d | Z | L |
|----------------|----|----|----|
| 627 225 | 12 | 14 | 32 |
| 628 178 | 15 | 16 | 38 |
| 628 185 | 18 | 18 | 40 |
| 628 192 | 22 | 27 | 49 |
| 628 208 | 28 | 31 | 55 |
| 628 215 | 35 | 33 | 59 |

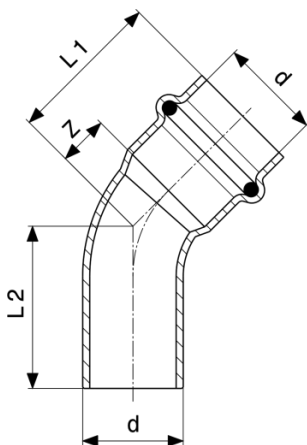


| Article | d | Z | L1 | L2 |
|----------------|----|----|----|----|
| 628 222 | 12 | 15 | 32 | 34 |
| 628 239 | 15 | 16 | 38 | 41 |
| 628 246 | 18 | 18 | 40 | 42 |
| 628 253 | 22 | 27 | 49 | 51 |
| 628 260 | 28 | 31 | 55 | 60 |
| 628 277 | 35 | 33 | 59 | 63 |



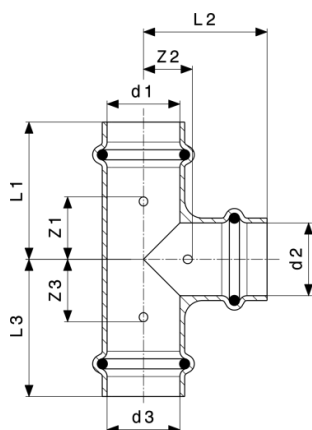
Profipress S elbow 45°
- copper
Model 4526

| Article | d | Z | L |
|----------------|----|----|----|
| 628 284 | 12 | 6 | 24 |
| 628 291 | 15 | 7 | 29 |
| 628 307 | 18 | 7 | 29 |
| 628 314 | 22 | 11 | 34 |
| 628 321 | 28 | 12 | 36 |
| 628 338 | 35 | 15 | 41 |



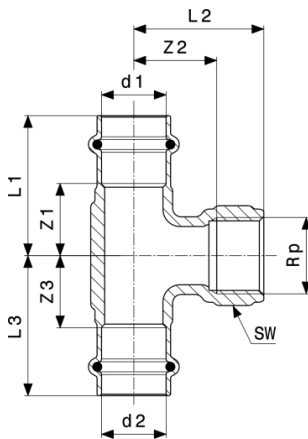
Profipress S elbow 45°
- copper
Model 4526.1

| Article | d | Z | L1 | L2 |
|----------------|----|----|----|----|
| 628 345 | 12 | 6 | 24 | 26 |
| 628 352 | 15 | 7 | 29 | 29 |
| 628 369 | 18 | 7 | 29 | 31 |
| 628 376 | 22 | 11 | 34 | 36 |
| 628 383 | 28 | 12 | 36 | 40 |
| 628 390 | 35 | 15 | 41 | 43 |



Profipress S T-piece
- copper
Model 4518

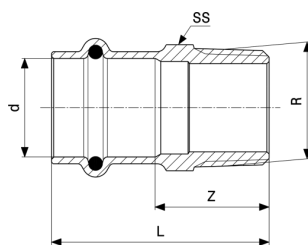
| Article | d1 | d2 | d3 | Z1 | Z2 | Z3 | L1 | L2 | L3 |
|----------------|----|----|----|----|----|----|----|----|----|
| 628 406 | 12 | 12 | 12 | 18 | 9 | 18 | 36 | 27 | 36 |
| 628 420 | 15 | 12 | 15 | 16 | 12 | 16 | 39 | 30 | 39 |
| 628 413 | 15 | 15 | 15 | 19 | 11 | 19 | 41 | 33 | 41 |
| 628 444 | 18 | 15 | 18 | 18 | 13 | 18 | 41 | 35 | 41 |
| 628 437 | 18 | 18 | 18 | 20 | 13 | 20 | 42 | 35 | 42 |
| 627 843 | 22 | 15 | 22 | 18 | 15 | 18 | 41 | 37 | 41 |
| 628 550 | 22 | 18 | 22 | 19 | 15 | 19 | 42 | 37 | 42 |
| 628 451 | 22 | 22 | 22 | 19 | 15 | 19 | 42 | 38 | 42 |
| 628 574 | 28 | 15 | 28 | 17 | 19 | 17 | 41 | 41 | 41 |
| 628 581 | 28 | 18 | 28 | 18 | 19 | 18 | 42 | 41 | 42 |
| 628 598 | 28 | 22 | 28 | 20 | 19 | 20 | 45 | 42 | 45 |
| 628 567 | 28 | 28 | 28 | 24 | 19 | 24 | 48 | 43 | 48 |
| 628 611 | 35 | 22 | 35 | 19 | 22 | 19 | 46 | 45 | 46 |
| 628 628 | 35 | 28 | 35 | 22 | 22 | 22 | 49 | 46 | 49 |
| 628 604 | 35 | 35 | 35 | 26 | 22 | 26 | 52 | 48 | 52 |



Profipress S T-piece
- gunmetal or silicon bronze
Model 4517.2

| Article | d1 | Rp | d2 | Z1 | Z2 | Z3 | L1 | L2 | L3 | SW |
|----------------|----|----|----|----|----|----|----|----|----|----|
| 628 635 | 15 | ½ | 15 | 19 | 11 | 19 | 41 | 21 | 41 | |
| 628 642 | 18 | ½ | 18 | 18 | 12 | 18 | 40 | 22 | 40 | 26 |
| 628 659 | 22 | ½ | 22 | 19 | 13 | 19 | 42 | 28 | 42 | 26 |
| 628 666 | 28 | ½ | 28 | 21 | 17 | 21 | 45 | 32 | 45 | 26 |
| 628 673 | 35 | ½ | 35 | 19 | 20 | 19 | 45 | 35 | 45 | 26 |

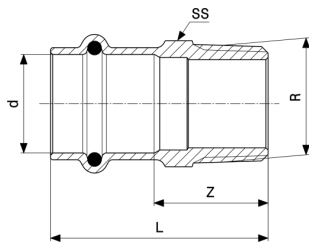
SW = Spanner width



Profipress S adapter
- gunmetal or silicon bronze
Model 4511

| Article | d | R | Z | L | SW |
|----------------|----|----|----|----|----|
| 628 680 | 12 | ⅜ | 18 | 35 | 17 |
| 628 703 | 12 | ½ | 20 | 37 | 17 |
| 628 697 | 15 | ½ | 24 | 46 | 19 |
| 628 710 | 18 | ½ | 23 | 44 | 22 |
| 628 727 | 18 | ¾ | 27 | 49 | 22 |
| 628 734 | 22 | ¾ | 26 | 49 | 27 |
| 628 741 | 22 | 1 | 33 | 56 | 30 |
| 628 758 | 28 | 1 | 32 | 55 | 34 |
| 628 765 | 28 | 1¼ | 35 | 58 | 34 |
| 628 772 | 35 | 1 | 28 | 53 | 40 |
| 627 232 | 35 | 1¼ | 34 | 60 | 43 |

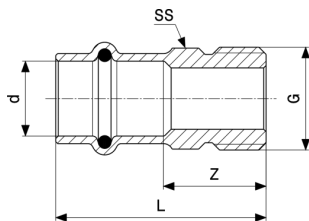
SW = Spanner width



Profipress S adapter
- gunmetal or silicon bronze
Model 4511

| Article | d | R | Z | L | SW |
|----------------|----|----|----|----|----|
| 627 249 | 35 | 1½ | 37 | 62 | 50 |

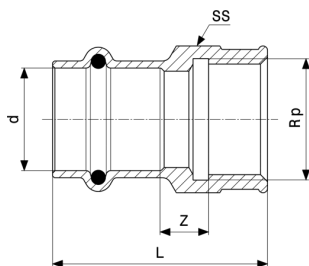
SW = Spanner width



Profipress S adapter
- gunmetal or silicon bronze
Model 4511.4

| Article | d | G | Z | L | SW |
|----------------|----|---|----|----|----|
| 629 137 | 18 | ¾ | 21 | 43 | 24 |
| 629 144 | 22 | 1 | 27 | 50 | 31 |

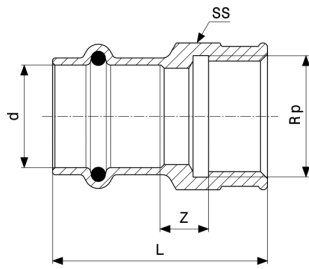
SW = Spanner width



Profipress S adapter
- gunmetal or silicon bronze
Model 4512

| Article | d | Rp | Z | L | SW |
|----------------|----|----|----|----|----|
| 628 857 | 12 | ⅜ | 7 | 32 | 21 |
| 628 864 | 15 | ½ | 7 | 44 | 26 |
| 628 871 | 18 | ½ | 6 | 43 | 26 |
| 628 888 | 18 | ¾ | 10 | 45 | 31 |
| 628 895 | 22 | ¾ | 11 | 47 | 31 |
| 628 901 | 22 | 1 | 14 | 52 | 38 |
| 628 918 | 28 | 1 | 14 | 52 | 38 |

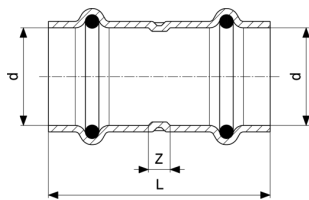
SW = Spanner width



Profipress S adapter
- gunmetal or silicon bronze
Model 4512

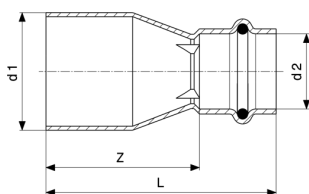
| Article | d | Rp | Z | L | SW |
|----------------|----|----|----|----|----|
| 628 925 | 35 | 1¼ | 14 | 54 | 47 |

SW = Spanner width



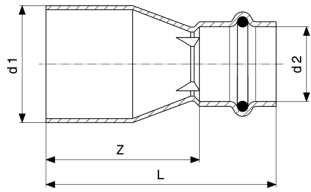
Profipress S coupling
- copper
Model 4515

| Article | d | Z | L |
|----------------|----|---|----|
| 628 932 | 12 | 3 | 39 |
| 628 949 | 15 | 3 | 47 |
| 628 956 | 18 | 5 | 49 |
| 628 963 | 22 | 5 | 51 |
| 628 970 | 28 | 4 | 52 |
| 628 987 | 35 | 4 | 56 |



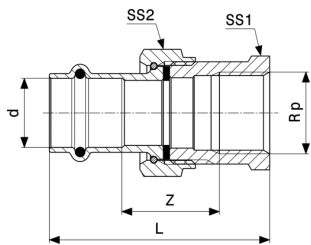
Profipress S reducer
- copper
Model 4515.1

| Article | d1 | d2 | Z | L |
|----------------|----|----|----|----|
| 628 994 | 15 | 12 | 32 | 50 |
| 629 007 | 18 | 15 | 32 | 54 |
| 629 014 | 22 | 15 | 36 | 58 |
| 629 021 | 22 | 18 | 33 | 55 |
| 629 038 | 28 | 15 | 43 | 65 |
| 629 045 | 28 | 18 | 39 | 61 |



Profipress S reducer
- copper
Model 4515.1

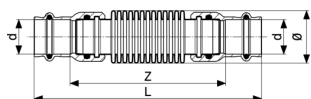
| Article | d1 | d2 | Z | L |
|----------------|----|----|----|----|
| 629 052 | 28 | 22 | 31 | 54 |
| 629 069 | 35 | 22 | 46 | 69 |
| 629 076 | 35 | 28 | 39 | 63 |



Profipress S adapter union
- gunmetal or silicon bronze
Model 4562

| Article | d | Rp | Z | L | SW1 | SW2 |
|----------------|----|----|----|----|-----|-----|
| 629 151 | 15 | ½ | 26 | 63 | 30 | 27 |
| 629 168 | 18 | ¾ | 36 | 68 | 30 | 31 |
| 629 175 | 22 | ¾ | 32 | 72 | 37 | 34 |
| 629 182 | 28 | 1 | 33 | 76 | 46 | 43 |
| 629 199 | 35 | 1¼ | 36 | 83 | 53 | 50 |

SW = Spanner width



Profipress S compensator
Model 4551

| Article | d | Z | L | Ø |
|----------------|----|-----|-----|----|
| 629 083 | 15 | 100 | 144 | 23 |
| 629 090 | 18 | 104 | 148 | 27 |
| 629 106 | 22 | 102 | 149 | 34 |
| 629 113 | 28 | 121 | 168 | 41 |
| 629 120 | 35 | 123 | 174 | 50 |

Imprint

Viega GmbH & Co. KG

Viega Platz 1
57439 Attendorn
Germany
Phone: +49/2722/61-0
Fax: +49/2722/61-1566

The Viega GmbH & Co. KG is represented by the general partners: Viega Management B.V. (Managing directors: Michael Klenz, Sebastian Lelgemann) and Viega Management GmbH (Managing directors: Michael Klenz, Sebastian Lelgemann)

The Submittal Package contains non-binding information that is being provided to you. All contents in the Submittal Package have been compiled with the greatest possible care and attention. Despite this, we are unable to guarantee that the information is up to date, accurate and complete. Placing an order does not automatically render the Submittal Package part of the contract.