

Profipress G

Submittal Package



viega

table of contents

1	Product group description_____	3
2	Areas of application_____	5
3	Permitted pipes_____	8
4	Certificates_____	9
5	Z dimensions_____	11
6	Imprint_____	35

Product group description

Flow-optimised press connector system made of copper (99.9 % Cu-DHP), gunmetal or silicon bronze for copper pipes. Press connectors for protecting the sealing element equipped with cylindrical pipe guide. Press connectors from d64.0 with stainless steel cutting ring to ensure the mechanical strength of the connection. The pressing force is located before and behind the sealing element seat. Suitable for concealed and pre-wall installations of riser pipes and floor installations.

Marking

Manufacturer, pipe dimension, batch, approval markings (DVGW), yellow dot on press end, yellow rectangle with inscription »Gas MOP 5 / GT1«, detachable orange label as press indicator from d64.0

Press connector with SC-Contur

Inadvertently unpressed connections are noticed immediately during a leakage test.

Viega guarantees the detection of unpressed connections in the following pressure ranges with compressed air or inert gases:

min. air pressure: 22 hPa / 2.2 kPa / 22 mbar / 0.3 PSI

max. air pressure: 0.3 MPa / 300kPa / 3 bar / 43.5 PSI

Sealing elements

HNBR (hydrogenated acrylonitrile butadiene rubber), yellow, pre-assembled

Dimensions

d12–64.0, size availability in accordance with the national regulations

Tools

The functional safety of Viega press connector systems depends primarily on the faultless condition of the press tools used. For the manufacture of press connections, Viega recommends the use of Viega press tools. Viega press tools have to be regularly maintained by authorised service partners.

Areas of application

Natural gas/liquid gas

Heating oil/diesel fuel (d12–54)

Note

Use of the system for areas of application and media other than those described must be agreed in consultation with Viega! Detailed information about applications, restrictions and national standards and directives can be found in the product information, either printed or on the Viega website.

Note – Standards and approvals

Press connectors tested in accordance with DVGW Worksheet W 534 with DVGW test mark.

Approval for d12–64.0 in accordance with DVGW-registration no. DG 4550AU0070.

Press connectors suitable for copper pipes in accordance with DIN EN 1057 and DVGW Worksheet GW 392.

Gases in accordance with DVGW G 260 in gas installations in accordance with DVGW-TRGI 2018 (DVGW Worksheet G 600) / DVFG-TRF 2021.

Liquid gases in the gas phase for domestic and commercial applications, tested in accordance with DVGW Worksheet G 5614.

Piping for heating oil in accordance with DIN 51603 and piping for diesel fuel as suction and pressure line in accordance with DIN EN 590 in consideration of the General Building Approval Z-38.4-71.

Operating conditions gas and liquid gas installations

operating temperature -20 °C to +70 °C (-4 °F to +158 °F)

operating pressure max. 0.5 MPa / 5 bar / 72.5 PSI

operating pressure at HTB requirements 650°C (1202 °F)/30 minutes max. 0.1 MPa (1 bar; 14.5 PSI)

Operating conditions heating oil and diesel fuel installation

operating temperature max. 40 °C / 104 °F

operating pressure -0.05 to +0.5 MPa (-0.5 to +5 bar / -7.25 to +72.5 PSI)

Material press connector

Copper: 99.9 % Cu-DHP

gunmetal: CC499K

silicon bronze: CC246E / CuSi4Zn9MnP

Viptool software solutions

Software solutions for the service management and detailed planning of Viega piping, pre-wall, flushing and drainage technology.

For a quick and simple solution to specific planning tasks use further free web applications, which can be found on the Viega website.

Pressure gradient calculator

Web application for quick and simple calculation of piping dimensions for potable water, heating and gas supply lines with associated pressure loss tables across the entire system.

Fireprotection-configurator

Web application as digital expansion to the printed "Application technology for structural fire protection".

Professional shaft configuration with up to ten lead-ins as planning aid for safe zero clearance can be found on the Viega website.

Subject to change without prior notice!

Latest Z- and installation dimensions as well as further technical information can be found on the Viega website and have to be checked before purchase, planning, construction work and use. Our products are continuously optimised.

Areas of application

system name: Profipress G

areas of application	properties	values
heating oil acc. to DIN 51603-1 diesel acc. to DIN EN 590	max operating pressure	0.5 MPa / 5 bar / 72.5 psi
acc. to TRbF (German Technical Regulations for Flammable Liquids)	max. operating temperature	40 °C / 104 °F
compressed air	max operating pressure	1.6 MPa / 16 bar / 232.1 psi
oil concentration <= 25 mg/m ³	max. operating temperature	60 °C / 140 °F
compressed air	max operating pressure	1.6 MPa / 16 bar / 232.1 psi
oil concentration >= 25 mg/m ³	max. operating temperature	60 °C / 140 °F
natural gas	max operating pressure	0.5 MPa / 5 bar / 72.5 psi
acc. to G 260	max. operating temperature	60 °C / 140 °F
natural gas	max operating pressure	0.1 MPa / 1 bar / 14.5 psi
acc. to G 260 in case of HTR requirements (higher thermal resistance)	max. operating temperature	60 °C / 140 °F
liquid gases: Propane, butane, methane	max operating pressure	0.5 MPa / 5 bar / 72.5 psi
acc. to G 260	max. operating temperature	60 °C / 140 °F
liquid gases: Propane, butane, methane	max operating pressure	0.1 MPa / 1 bar / 14.5 psi
acc. to G 260 in case of HTR requirements (higher thermal resistance)	max. operating temperature	60 °C / 140 °F
Argon	max operating pressure	1.6 MPa / 16 bar / 232.1 psi
d12-54	max. operating temperature	60 °C / 140 °F
Argon	max operating pressure	1 MPa / 10 bar / 145 psi
d64.0	max. operating temperature	60 °C / 140 °F
Carbogen	max operating pressure	1.6 MPa / 16 bar / 232.1 psi
carbon dioxide + oxygen dry d12-54	max. operating temperature	60 °C / 140 °F
Carbogen	max operating pressure	1 MPa / 10 bar / 145 psi
d64.0	max. operating temperature	60 °C / 140 °F
Nitrogen	max operating pressure	1.6 MPa / 16 bar / 232.1 psi
downstream of the vaporiser d12-54	max. operating temperature	60 °C / 140 °F
Nitrogen	max operating pressure	1 MPa / 10 bar / 145 psi
d64.0	max. operating temperature	60 °C / 140 °F

system name: Profipress G

areas of application	properties	values
Hydrogen	max operating pressure	0.5 MPa / 5 bar / 72.5 psi
	max. operating temperature	60 °C / 140 °F
Carbon dioxide dry d12-54	max operating pressure	1.6 MPa / 16 bar / 232.1 psi
	max. operating temperature	60 °C / 140 °F
Carbon dioxide d64.0	max operating pressure	1 MPa / 10 bar / 145 psi
	max. operating temperature	60 °C / 140 °F
Carbon monoxide stainless steel components not permitted d12-54	max operating pressure	1.6 MPa / 16 bar / 232.1 psi
	max. operating temperature	60 °C / 140 °F
Carbon monoxide d64.0	max operating pressure	1 MPa / 10 bar / 145 psi
	max. operating temperature	60 °C / 140 °F
Coarse vacuum P (absolute) = 1hPa	max. operating temperature	70 °C / 158 °F
forming gas (dry/inert gas) Argon + carbon dioxide (example Corgon) d12-54	max operating pressure	1.6 MPa / 16 bar / 232.1 psi
	max. operating temperature	60 °C / 140 °F
forming gas (dry/inert gas) d64.0	max operating pressure	1 MPa / 10 bar / 145 psi
	max. operating temperature	60 °C / 140 °F
Helium d12-54	max operating pressure	1.6 MPa / 16 bar / 232.1 psi
	max. operating temperature	60 °C / 140 °F
Helium d64.0	max operating pressure	1 MPa / 10 bar / 145 psi
	max. operating temperature	60 °C / 140 °F
Krypton d12-54	max operating pressure	1.6 MPa / 16 bar / 232.1 psi
	max. operating temperature	60 °C / 140 °F
Krypton d64.0	max operating pressure	1 MPa / 10 bar / 145 psi
	max. operating temperature	60 °C / 140 °F
Neon d12-54	max operating pressure	1.6 MPa / 16 bar / 232.1 psi
	max. operating temperature	60 °C / 140 °F
Neon d64.0	max operating pressure	1 MPa / 10 bar / 145 psi
	max. operating temperature	60 °C / 140 °F
Xenon d12-54	max operating pressure	1.6 MPa / 16 bar / 232.1 psi
	max. operating temperature	60 °C / 140 °F








system name: Profipress G









areas of application	properties	values
Xenon d64.0	max operating pressure	1 MPa / 10 bar / 145 psi
	max. operating temperature	60 °C / 140 °F
synthetic air d12–54	max operating pressure	1.6 MPa / 16 bar / 232.1 psi
	max. operating temperature	60 °C / 140 °F
synthetic air d64.0	max operating pressure	1 MPa / 10 bar / 145 psi
	max. operating temperature	60 °C / 140 °F
biogas – after biogas treatment acc. to G260 and G262	max operating pressure	0.5 MPa / 5 bar / 72.5 psi
	max. operating temperature	60 °C / 140 °F
biogas – after biogas treatment acc. to G260 and G262 in case of HTR requirements (higher thermal resistance)	max operating pressure	0.1 MPa / 1 bar / 14.5 psi
	max. operating temperature	60 °C / 140 °F

Permitted pipes

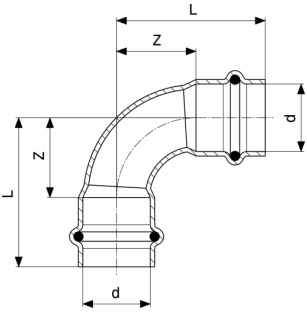
standard	DN	external Ø	wall thickness
copper DIN EN 1057	10	12	0.8 1.0
	12	15	1.0
	15	18	
	20	22	
	25	28	1.0 1.5
	32	35	1.2 1.5
	40	42	
	50	54	1.5 2.0
	60	64.0	2.0

Certificates

	ÖVGW certificate Profipress G (d 12 - 64)
	ÖVGW certificate Sanpress G (d 15 - 28)
	SAI StandardsMark Licence Propress, Sanpress and Sanpress Inox
ARGB	gas.be - ARGB-KBVG Certificate Profipress G (d 12-54)
RUE Stroy	RUE Stroytechnorm Certificate Profipress, Profipress G, Sanpress, Megapress, Megapress G, Megapress S, soldered fittings, gunmetal threaded fittings
	SVGW certificate Profipress G (d 12 - 64)
SZU	SZU Certificate Profipress G
	DVGW Baumusterprüfzertifikat Sanpress G (d 15 - 28)
	CERTgaz Certificate Profipress G copper
	CERTgaz Certificate Profipress G copper alloy
BSI	BSI Kitemark Certificate (BS EN 1254-7) Profipress, Profipress G

	IMQ Certificate Profipress G
	IMQ Certificate Profipress G XL
	Gastec Certificate Profipress G
	Gastec Certificate Profipress G (Hydrogen gas)
	INIG National Technical Assessment Profipress G
	INIG National Certificate of Constancy of Performance Profipress G
	OOO Profit Certificate Profipress G
	IZV Certificate Profipress G, Profipress G XL

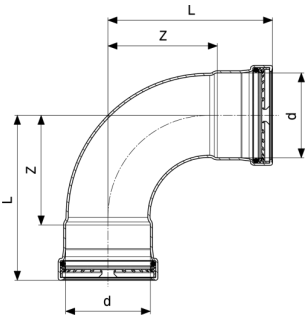
Z dimensions



Profipress G elbow 90°
- copper
Model 2616

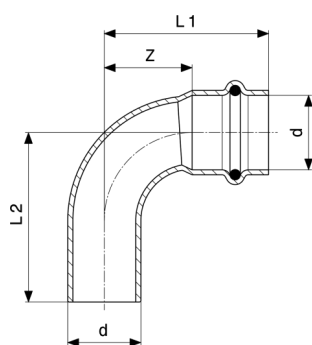
Article	d	Z	L	Z*	L*
346 850	12	14	32		
345 464	15	16	38	18	40
345 471	18	18	40	22	44
345 488	22	26	49	19	42
345 495	28	31	55	34	58
345 501	35	33	59	42	68
345 518	42	33	69	50	86
345 525	54	55	95	65	105

Z* = Z dimension of previous version
L* = Length of previous version



Profipress G XL elbow 90°
- copper
Model 2616XL

Article	d	Z	L
577 919	64	84	127

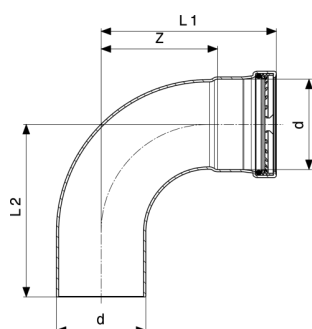


Profipress G elbow 90°
- copper
Model 2616.1

Article	d	Z	L1	L2	Z*	L1*	L2*
346 881	12	14	32	34			
345 532	15	16	38	41	18	40	41
345 549	18	18	40	42	22	44	44
345 556	22	26	49	51	19	42	47
345 563	28	31	55	60	34	58	60
345 570	35	33	59	63	42	68	70
345 587	42	33	69	71	50	86	88
345 594	54	55	95	96	65	105	107

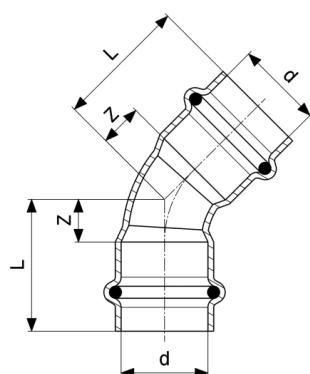
Z* = Z dimension of previous version

L* = Length of previous version



Profipress G XL elbow 90°
- copper
Model 2616.1XL

Article	d	Z	L1	L2
577 926	64	84	127	126

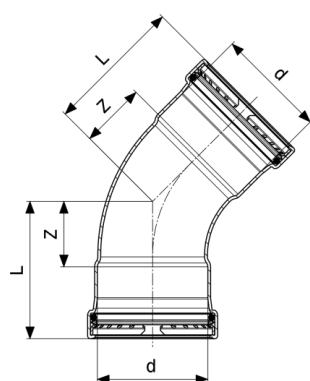


Profipress G elbow 45°
- copper
Model 2626

Article	d	Z	L	Z*	L*
346 898	12	6	24		
345 600	15	7	29	8	30
345 617	18	7	29	9	31
345 624	22	11	34	9	32
345 631	28	12	36	14	38
345 648	35	15	41	17	43
345 655	42	17	53	21	57
345 662	54	22	62	27	67

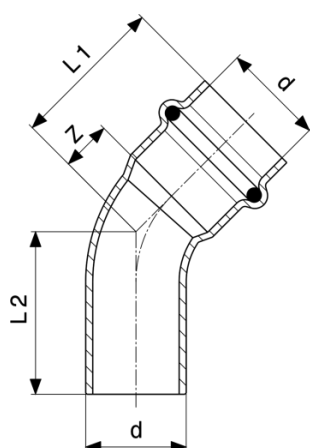
Z* = Z dimension of previous version

L* = Length of previous version



Profipress G XL elbow 45°
- copper
Model 2626XL

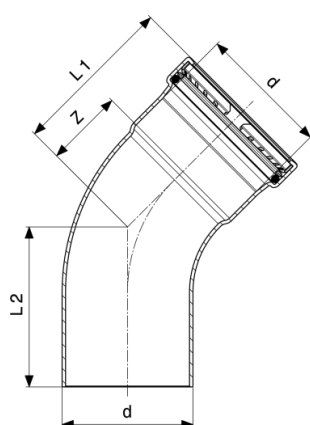
Article	d	Z	L
577 957	64	39	82



Profipress G elbow 45°
- copper
Model 2626.1

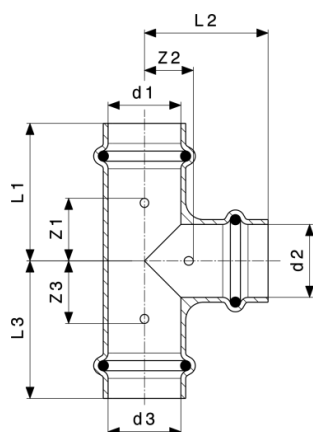
Article	d	Z	L1	L2	Z*	L1*	L2*
346 904	12	7	29	29			
345 679	15	7	29	29	8	30	31
345 686	18	7	29	31	9	31	32
345 693	22	11	34	36	9	32	34
345 709	28	12	36	40	14	38	40
345 716	35	15	41	43	17	43	45
345 723	42	17	53	52	21	57	59
345 730	54	22	62	64	27	67	71

Z* = Z dimension of previous version
L* = Length of previous version



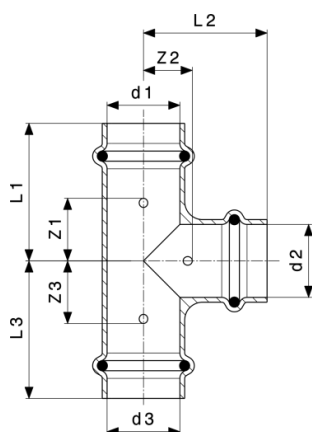
Profipress G XL elbow 45°
- copper
Model 2626.1XL

Article	d	Z	L1	L2
577 964	64	39	82	82



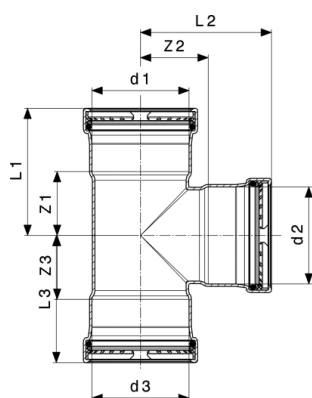
Profipress G T-piece
- copper
Model 2618

Article	d1	d2	d3	Z1	Z2	Z3	L1	L2	L3
346 959	12	12	12	17	9	17	36	27	36
346 966	12	15	12	20	10	20	38	32	38
346 973	15	12	12	17	12	21	39	30	39
346 980	15	12	15	16	12	16	39	30	39
346 997	15	15	12	23	11	18	41	33	41
345 938	15	15	15	19	11	19	41	33	41
346 003	18	15	18	18	13	18	41	35	41
345 945	18	18	18	20	13	20	42	35	42
347 000	22	12	22	16	15	16	39	33	39
346 010	22	15	15	12	15	17	35	37	39
346 027	22	15	22	12	15	12	38	37	38
346 034	22	18	22	13	15	13	38	37	38
346 041	22	22	15	19	15	29	19	38	51
345 952	22	22	22	19	15	19	42	38	42
346 058	28	15	28	17	19	17	41	41	41
633 851	28	18	28	18	19	18	42	41	42
346 065	28	22	28	20	19	20	45	42	45
345 969	28	28	28	24	19	24	48	43	48
346 072	35	22	35	19	22	19	46	45	46
346 089	35	28	35	22	22	22	49	46	49
345 976	35	35	35	26	22	26	52	48	52
664 589	42	22	42	17	29	17	53	52	53
346 096	42	28	42	19	29	19	55	53	55
346 102	42	35	42	22	29	22	58	55	58
345 983	42	42	42	29	29	29	65	65	65
664 572	54	28	54	22	35	22	63	59	63



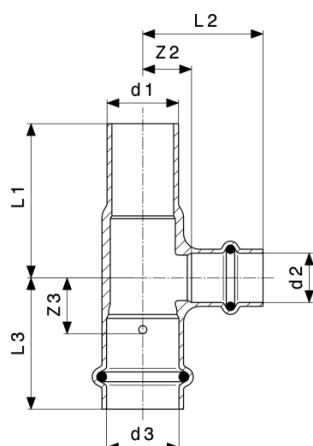
Profipress G T-piece
- copper
Model 2618

Article	d1	d2	d3	Z1	Z2	Z3	L1	L2	L3
346 119	54	42	54	29	35	29	69	71	69
345 990	54	54	54	35	35	35	75	75	75



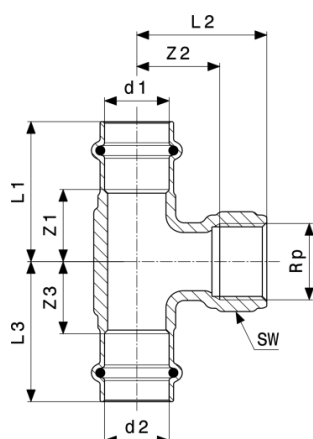
Profipress G XL T-piece
- copper
Model 2618XL

Article	d1	d2	d3	Z1	Z2	Z3	L1	L2	L3
577 940	64	54	64	41	42	41	84	82	84
577 933	64	64	64	46	47	46	89	90	89



Profipress G T-piece
- copper
Model 2618.1

Article	d1	d2	d3	Z3	Z2	L1	L2	L3
477 363	22	15	22	13	15	41	37	43



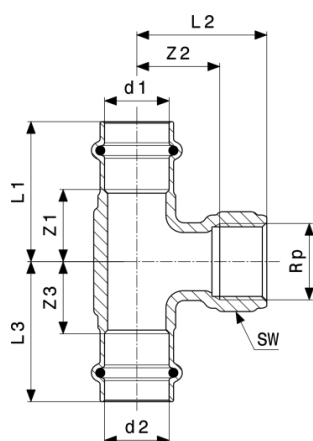
Profipress G T-piece
- gunmetal
Model 2617.2

Article	d1	Rp	d2	Z1	Z2	Z3	L1	L2	L3	SW
352 707	15	½	15	19	11	19	41	21	41	
352 714	18	½	18	18	9	18	40	24	40	26
352 721	22	½	22	19	13	19	42	28	42	26
352 738	22	¾	22	25	29	25	49	45	49	32
352 745	28	½	28	25	31	25	49	32	49	26
352 752	28	¾	28	29	34	29	53	50	53	32
352 769	35	½	35	19	20	19	45	35	45	26
361 327	35	1	35	35	36	35	60	55	60	39
352 776	42	½	42	19	35	19	55	50	55	28
361 334	42	1	42	29	40	29	65	59	65	39

SW = Spanner width

Z* = Z dimension of previous version

L* = Length of previous version



Profipress G T-piece
- gunmetal
Model 2617.2

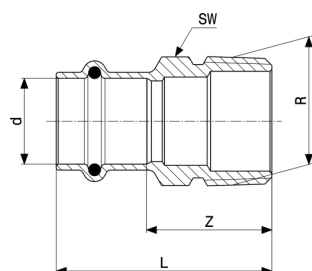
Article	d1	Rp	d2	Z1	Z2	Z3	L1	L2	L3	SW
352 783	54	½	54	26	40	26	66	55	66	28
361 341	54	1	54	30	47	30	70	66	70	39

Article	d1	Rp	d2	Z1*	Z2*	Z3*	L1*	L2*	L3*
352 707	15	½	15	22	9	22	45	21	45
352 714	18	½	18	23	25	23	45	40	45
352 721	22	½	22	25	28	25	49	43	49
352 738	22	¾	22						
352 745	28	½	28						
352 752	28	¾	28						
352 769	35	½	35	23	34	23	49	49	49
361 327	35	1	35						
352 776	42	½	42						
361 334	42	1	42						
352 783	54	½	54						
361 341	54	1	54						

SW = Spanner width

Z* = Z dimension of previous version

L* = Length of previous version



Profipress G adapter
- gunmetal
Model 2611

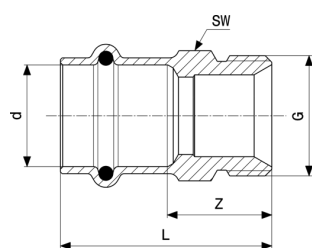
Article	d	R	Z	L	SW	Z*	L*	SW*
347 017	12	$\frac{3}{8}$	18	35	17	17	34	17
347 024	12	$\frac{1}{2}$	20	37	17	20	38	22
346 126	15	$\frac{1}{2}$	24	46	19	20	44	22
346 133	15	$\frac{3}{4}$	28	50	22	28	48	27
346 140	18	$\frac{1}{2}$	23	45	22	21	43	22
346 157	18	$\frac{3}{4}$	27	49	22	25	47	27
346 164	22	$\frac{1}{2}$	25	49	27	22	45	27
346 171	22	$\frac{3}{4}$	26	49	27	27	50	27
346 188	22	1	33	56	30			
346 270	28	$\frac{3}{4}$	29	52	33			
346 287	28	1	32	55	34			
346 294	28	1 $\frac{1}{4}$	35	58	34	38	62	42
346 300	35	1	28	53	39			
346 317	35	1 $\frac{1}{4}$	34	60	43	34	59	43
346 324	35	1 $\frac{1}{2}$	37	62	50	35	60	50
346 331	42	1 $\frac{1}{4}$	29	65	47			
346 348	42	1 $\frac{1}{2}$	30	66	50	31	67	50
346 355	54	1 $\frac{1}{2}$	38	78	68			
346 362	54	2	39	79	66			

SW = Spanner width

Z* = Z dimension of previous version

L* = Length of previous version

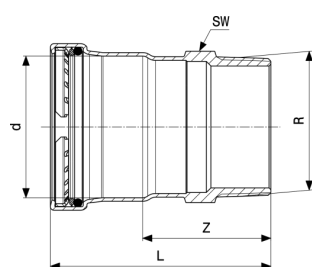
SW* = Previous version (spanner width)



Profipress G adapter
- gunmetal
Model 2611.5

Article	d	G	Z	L	SW
397 036	15	½	22	44	22
382 803	15	¾	21	43	25
397 043	18	½	21	43	22
382 810	18	¾	21	43	25
397 050	22	½	21	45	27
382 827	22	¾	23	46	27

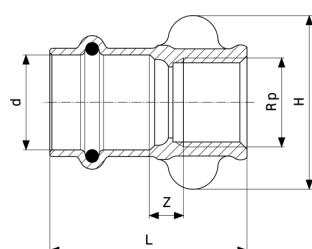
SW = Spanner width



Profipress G XL adapter
- copper
Model 2611XL

Article	d	R	Z	L	SW
577 902	64	2½	70	113	77

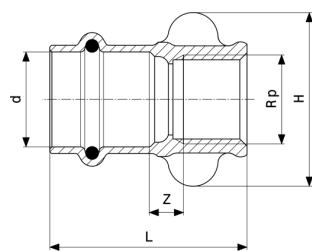
SW = Spanner width



Profipress G adapter
- gunmetal
Model 2612

Article	d	Rp	Z	L	SW
347 031	12	⅜	3	32	21
347 048	12	½	7	39	26
346 379	15	½	7	44	26

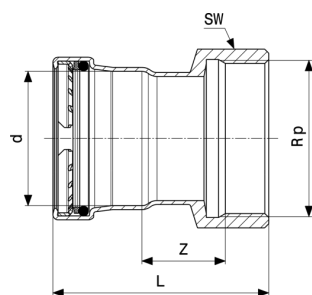
SW = Spanner width



Profipress G adapter
- gunmetal
Model 2612

Article	d	Rp	Z	L	SW
346 386	15	$\frac{3}{4}$	7	45	31
346 393	18	$\frac{1}{2}$	7	43	26
346 409	18	$\frac{3}{4}$	10	45	31
346 416	22	$\frac{1}{2}$	6	44	26
346 423	22	$\frac{3}{4}$	11	47	31
435 158	22	1	9	52	38
346 430	28	1	9	52	38
346 447	35	$1\frac{1}{4}$	14	54	47
346 454	42	$1\frac{1}{2}$	10	69	53
571 986	54	$1\frac{1}{2}$	11	72	68
346 461	54	2	19	80	70

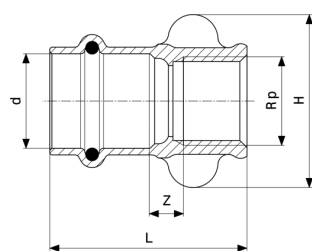
SW = Spanner width



Profipress G XL adapter
- copper
Model 2612XL

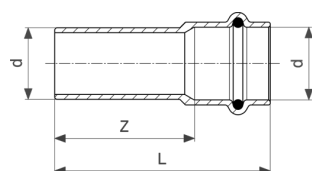
Article	d	Rp	Z	L	SW
577 896	64	$2\frac{1}{2}$	31	104	82

SW = Spanner width



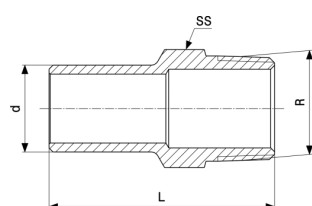
Profipress G adapter
- gunmetal
Model 2612.3

Article	d	Rp	Z	L	H
346 478	15	½	8	45	41



Profipress G adapter
- gunmetal
Model 2613

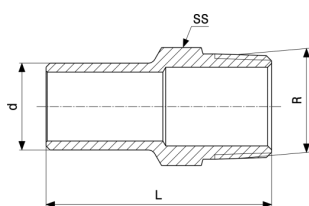
Article	d	Z	L
443 153	12	24	41
378 790	15	29	51
378 806	18	30	52
378 813	22	43	67
378 820	28	44	68



Sanpress plug-in piece
- gunmetal or silicon bronze
Model 2211.1

Article	d	R	L	SW
291 310	12	½	47	22
115 418	15	½	49	22
285 081	18	½	50	22
285 104	18	¾	56	27
119 676	22	½	53	22
116 767	22	¾	58	27
122 034	28	1	62	34

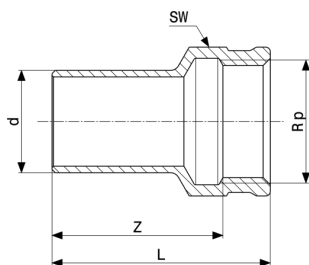
SW = Spanner width



Sanpress plug-in piece
- gunmetal or silicon bronze
Model 2211.1

Article	d	R	L	SW
125 288	35	1¼	66	43
132 231	42	1½	78	50

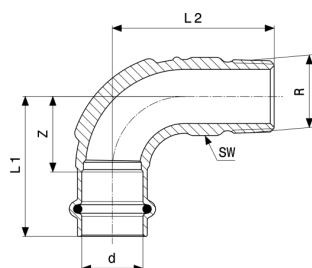
SW = Spanner width



Sanpress plug-in piece
- gunmetal or silicon bronze
Model 2212.1

Article	d	Rp	Z	L	SW
291 341	12	½	31	40	25
117 733	15	½	34	44	25
287 085	18	½	34	43	25
287 108	18	¾	35	45	31
120 917	22	½	36	45	25
117 481	22	¾	37	47	31
130 954	28	¾	37	47	31
122 942	28	1	39	51	38
134 730	35	1	42	54	38
130 589	35	1¼	46	59	47
135 430	42	1½	57	70	53
199 104	54	2	63	80	70

SW = Spanner width



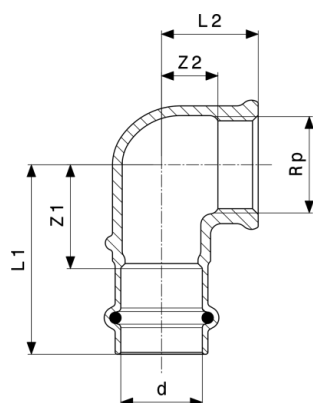
Profipress G adapter elbow 90°
- gunmetal
Model 2614

Article	d	R	Z	L1	L2	SW	Z*	L1*	L2*
346 911	12	$\frac{3}{8}$	19	37	40	15			
346 928	12	$\frac{1}{2}$	19	37	44	17			
345 747	15	$\frac{1}{2}$	17	39	35	20	23	45	47
345 754	18	$\frac{1}{2}$	24	46	50	21			
345 761	18	$\frac{3}{4}$	24	46	55	27			
345 778	22	$\frac{3}{4}$	28	51	59	27			
345 785	28	1	35	58	72	36			
345 792	35	$1\frac{1}{4}$	48	74	88	44			
345 808	42	$1\frac{1}{2}$	56	92	98	52			
345 815	54	2	70	110	120	61			

SW = Spanner width

Z* = Z dimension of previous version

L* = Length of previous version

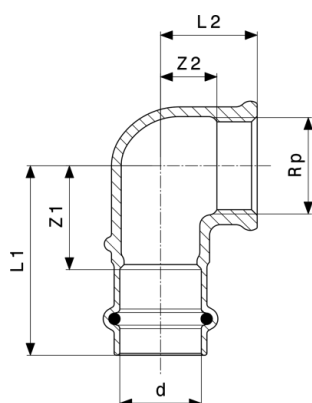


Profipress G adapter elbow 90°
- gunmetal
Model 2614.2

Article	d	Rp	Z1	Z2	L1	L2	Z1*	Z2*	L1*	L2*
346 935	12	$\frac{3}{8}$	21	9	38	17				
346 942	12	$\frac{1}{2}$	23	10	40	20				
345 822	15	$\frac{1}{2}$	22	12	44	22	25	12	44	22
345 839	15	$\frac{3}{4}$	28	14	50	25				

Z* = Z dimension of previous version

L* = Length of previous version

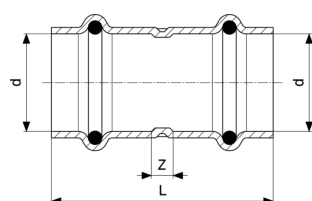


Profipress G adapter elbow 90°
- gunmetal
Model 2614.2

Article	d	Rp	Z1	Z2	L1	L2	Z1*	Z2*	L1*	L2*
345 846	18	½	24	12	46	22				
345 853	18	¾	28	13	50	24				
345 860	22	½	29	16	52	26				
345 877	22	¾	29	16	52	27				
345 884	22	1	36	17	59	29				
345 891	28	1	36	20	59	33				
345 907	35	1¼	41	24	66	39				
345 914	42	1½	41	28	77	43				
345 921	54	2	57	37	97	55				

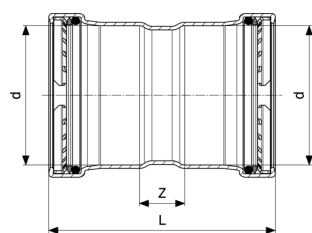
Z* = Z dimension of previous version

L* = Length of previous version



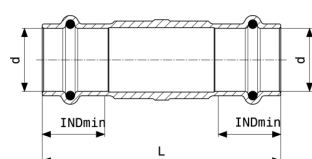
Profipress G coupling
- copper
Model 2615

Article	d	Z	L
347 055	12	3	39
346 485	15	3	47
346 492	18	5	49
346 508	22	5	51
346 515	28	4	52
346 522	35	4	56
346 539	42	4	76
346 546	54	4	84



Profipress G XL coupling
- copper
Model 2615XL

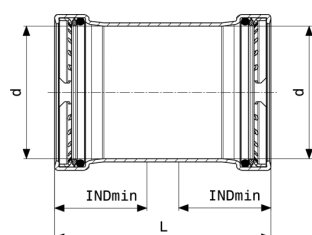
Article	d	Z	L
577 858	64	24	110



Profipress G slip coupling
- gunmetal
Model 2615.5

Article	d	L	INDmin
394 165	15	80	22
394 172	18	80	22
394 189	22	85	24
394 196	28	95	24
394 202	35	105	26
394 219	42	120	36
394 226	54	135	40

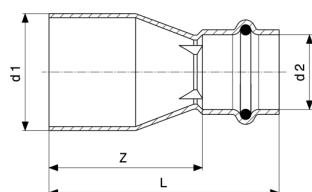
INDmin = Minimum insertion depth



Profipress G XL slip coupling
- copper
Model 2615.5XL

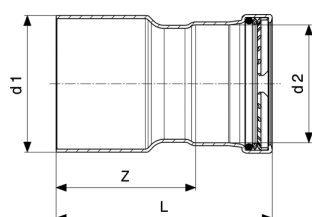
Article	d	L	INDmin
577 889	64	110	43

INDmin = Minimum insertion depth



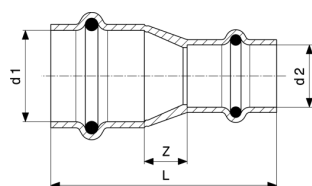
Profipress G reducer
- copper
Model 2615.1

Article	d1	d2	Z	L
347 062	15	12	32	50
346 553	18	15	32	54
346 560	22	15	36	58
346 577	22	18	33	55
346 584	28	15	43	65
346 591	28	18	39	61
346 607	28	22	30	53
346 614	35	22	46	69
346 621	35	28	39	63
346 638	42	22	70	93
346 645	42	28	63	87
346 652	42	35	56	82
346 669	54	35	71	97
346 676	54	42	64	100



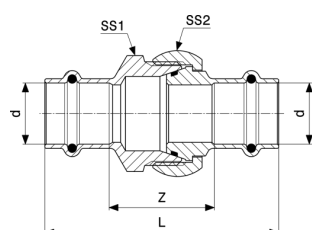
Profipress G XL reducer
- copper
Model 2615.1XL

Article	d1	d2	Z	L
577 865	64	42	67	103
577 872	64	54	60	100



Profipress G reducing coupling
- copper
Model 2615.2

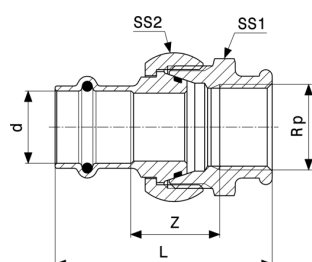
Article	d1	d2	Z	L
660 239	15	12	8	48



Profipress G screw fitting
- gunmetal
Model 2650

Article	d	Z	L	SW1	SW2
379 254	15	33	77	31	34
379 261	18	40	84	40	41
379 278	22	39	86	40	41
379 285	28	47	94	45	48
379 292	35	45	96	55	58
379 308	42	45	117	68	72
379 315	54	56	136	76	84

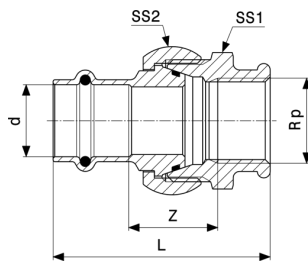
SW = Spanner width



Profipress G adapter union
- gunmetal
Model 2652

Article	d	Rp	Z	L	SW1	SW2
379 322	15	½	27	64	31	34
379 339	18	½	29	66	40	41
379 346	22	¾	28	68	40	41
379 353	28	1	59	83	45	48

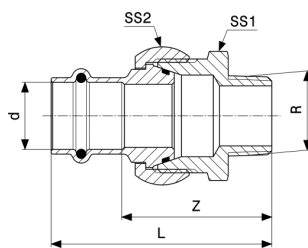
SW = Spanner width



Profipress G adapter union
- gunmetal
Model 2652

Article	d	Rp	Z	L	SW1	SW2
379 360	35	1¼	33	80	55	68
379 377	42	1½	38	95	68	72
379 384	54	2	47	113	76	84

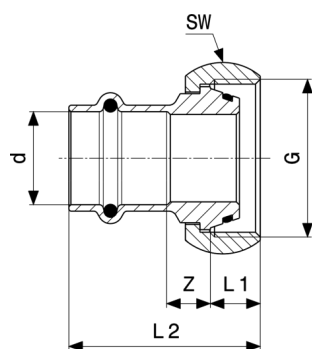
SW = Spanner width



Profipress G adapter union
- gunmetal
Model 2654

Article	d	R	Z	L	SW1	SW2
632 458	12	½	43	61	31	34
379 391	15	½	44	66	31	34
390 662	15	¾	47	69	31	34
379 407	18	½	49	71	40	41
390 679	18	¾	50	72	40	41
379 414	22	¾	50	74	40	41
390 686	22	1	55	79	40	41
477 981	28	¾	60	83	45	48
379 421	28	1	59	83	45	48
379 438	35	1¼	63	89	55	58
379 445	42	1½	66	102	68	72
379 452	54	2	76	116	76	84

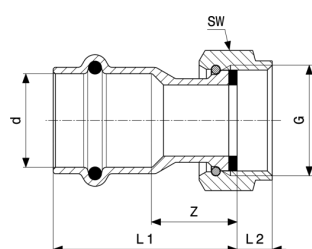
SW = Spanner width



Profipress G connection screw fitting
- gunmetal
Model 2661

Article	d	G	Z	L1	L2	SW
351 113	15	$\frac{7}{8}$	10	41	10	34
534 745	18	$1\frac{3}{8}$	15	50	13	48
351 120	22	$1\frac{1}{8}$	12	46	11	41
408 237	22	$1\frac{3}{8}$	15	51	13	48
351 137	28	$1\frac{3}{8}$	16	52	13	48

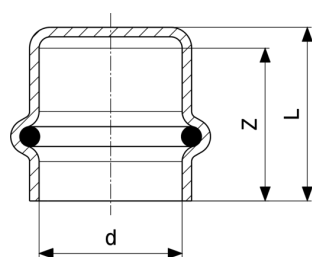
SW = Spanner width



Profipress G connection screw fitting
- gunmetal
Model 2666

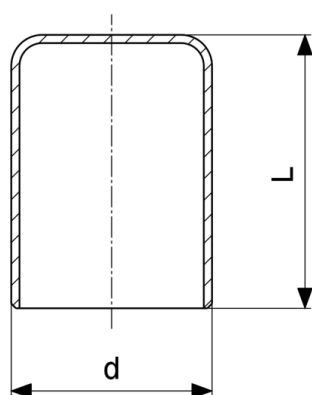
Article	d	G	Z	L1	L2	SW
638 474	15	$\frac{1}{2}$	15	44	7	24
638 481	18	$\frac{1}{2}$	17	46	7	24
638 498	22	$\frac{3}{4}$	21	52	8	30
638 559	22	$\frac{7}{8}$	19	50	8	34
638 504	28	1	19	50	8	37
477 455	28	$1\frac{1}{4}$	18	52	10	46
490 829	28	$1\frac{1}{2}$	15	50	11	52
638 511	35	$1\frac{1}{2}$	18	54	10	53
638 528	42	2	20	70	14	66

SW = Spanner width



Profipress G cap
- copper
Model 2656

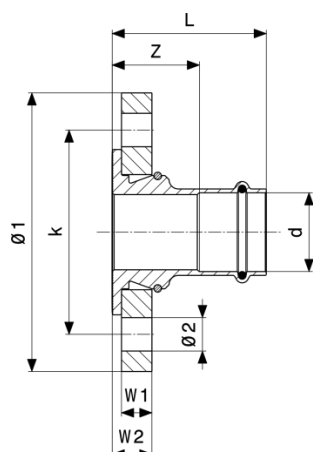
Article	d	Z	L
438 722	12	20	23
352 790	15	22	25
352 806	18	24	27
352 813	22	25	28
352 820	28	26	29
352 837	35	29	32
352 844	42	38	42
352 851	54	42	46



Profipress plug
- copper
Model 2457

Article	d	L
330 903	15	29
330 897	18	29
314 576	22	30
314 569	28	31
314 545*	42	46
314 538*	54	55

* = Discontinued, limited availability

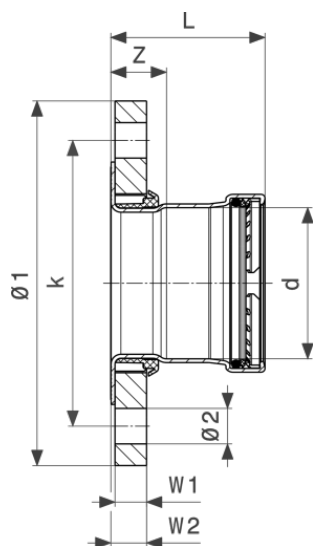


Profipress G flange adapter
- gunmetal
Model 2659.5

Article	DN	d	Z	L	W1	W2	Ø1	k	Ø2	n
490 669	25	28	42	65	16	21	115	85	14	4
567 019	32	35	45	70	16	21	140	100	18	4
567 026	40	42	47	83	16	21	150	110	18	4
567 033	50	54	50	90	16	21	165	125	18	4

k = Bolt circle Ø

n = Number of drill holes

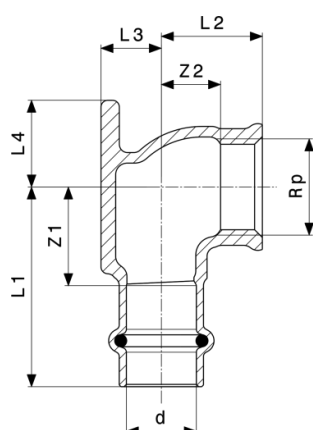


Profipress G XL flange adapter
- copper
Model 2659.5XL

Article	DN	d	Z	L	W1	W2	Ø1	k	Ø2	n
577 971	65	64	29	72	16	18	185	145	18	8

k = Bolt circle Ø

n = Number of drill holes



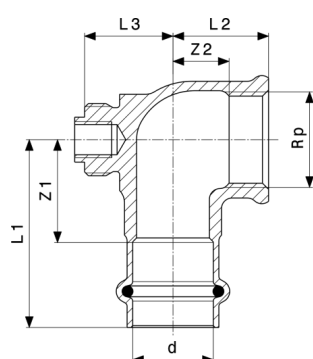
Profipress G wall plate
- gunmetal
Model 2625.5

Article	d	Rp	Z1	Z2	L1	L2	L3	L4	Z1*	Z2*
348 076	12	½	23	10	40	20	11	25		
346 683	15	½	22	13	44	22	13	19	24	12
346 690	18	½	22	12	44	22	15	19	24	12
346 706	22	¾	29	12	52	29	21	30		

Article	d	Rp	L1*	L2*	L3*	L4*
348 076	12	½				
346 683	15	½	46	21	22	13
346 690	18	½	46	21	22	15
346 706	22	¾				

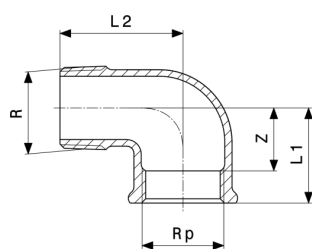
Z* = Z dimension of previous version

L* = Length of previous version



Profipress G connection elbow 90°
- gunmetal
Model 2614.6

Article	d	Rp	L1	L2	L3	Z1	Z2
475 079	22	¾	52	27	15	29	16
473 730	22	1	53	36	15	29	17
473 747	28	1	53	33	18	29	20



Connection elbow 90°
- gunmetal
Model 2614.5

Article	R	Rp	Z	L1	L2
444 792	1	1	19	39	50

Imprint

Viega GmbH & Co. KG

Viega Platz 1
57439 Attendorn
Germany
Phone: +49/2722/61-0
Fax: +49/2722/61-1566

The Viega GmbH & Co. KG is represented by the general partners: Viega Management B.V. (Managing directors: Michael Klenz, Sebastian Lelgemann) and Viega Management GmbH (Managing directors: Michael Klenz, Sebastian Lelgemann)

The Submittal Package contains non-binding information that is being provided to you. All contents in the Submittal Package have been compiled with the greatest possible care and attention. Despite this, we are unable to guarantee that the information is up to date, accurate and complete. Placing an order does not automatically render the Submittal Package part of the contract.